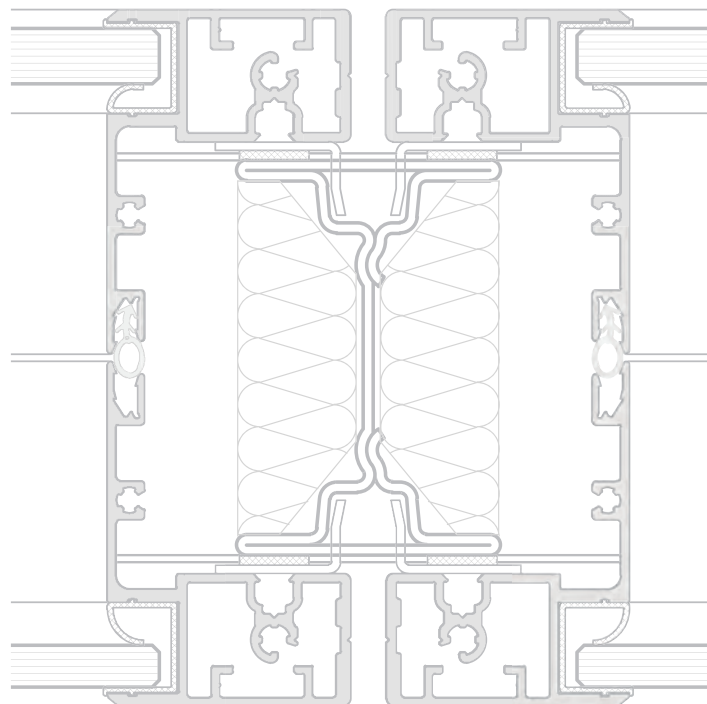


Partition System 2000



System 2000

Design with mullion
100 mm wall thickness
125 mm wall thickness

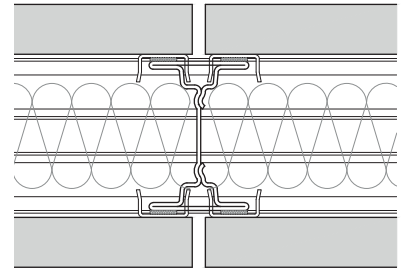
The basis for this highly flexible partition wall system with modular panel design for walls is the patented Strähle mullion with integrated suspension wall for panels, glazing and accessory systems.

This delivers substantial advantages in that the solid, glazed and acoustic cladding panels are extremely easy to insert, relocate and replace allowing almost limitless design possibilities. The system is further extended by a wide range of door frames and door solutions.

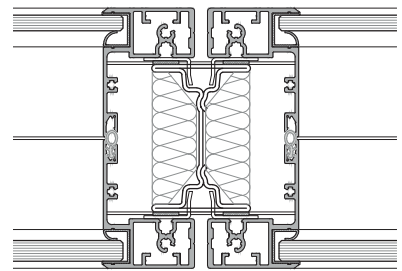
Our recommendation to achieve exceptionally high performance sound insulation is to use the 125 mm thick wall option with the integration of acoustic absorbers to both sides. In addition to enhanced acoustic performance, this option delivers increased structural stability which is particularly beneficial for exceptionally high rooms.



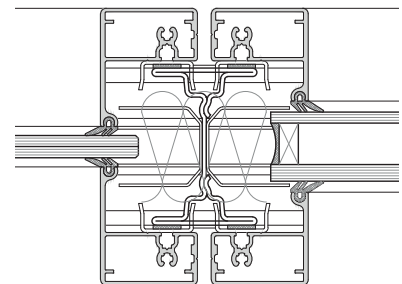
Solid wall



Flush glazing



Central glazing



Design

Design with mullion

Options

Solid wall, flush framed glazing, central glazing

Element types

Solid wall, balustrade, toplight, fully-glazed

Surface

Solid wall (melamine, veneered, HPL or laquered)

Glass wall (toughened safety glass / acoustic laminated glass and insulating glass)

Anodized / powder-coated aluminium glass frame

Wall thickness

100 / 125 mm, special version 160 mm

Visible width

Solid wall: 5 mm joint

Glass wall: frame width 2 x 25 mm / 2 x 35 mm

Sound insulation

Solid wall: bis Rwp 53 dB (special version Rwp 57 dB)

Glass wall: bis Rwp 51 dB (special version Rwp 52 dB)

Fire prevention

Solid wall: various - further details upon request

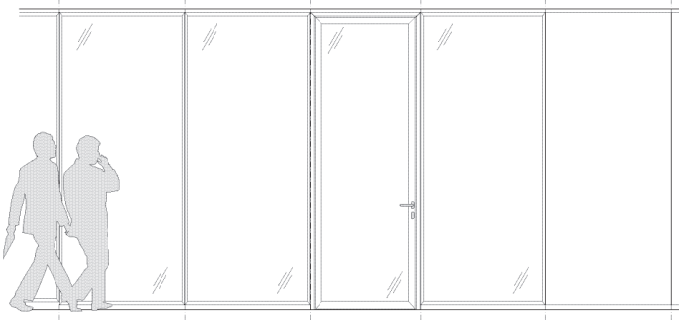
Glass wall: various - further details upon request

Accessories

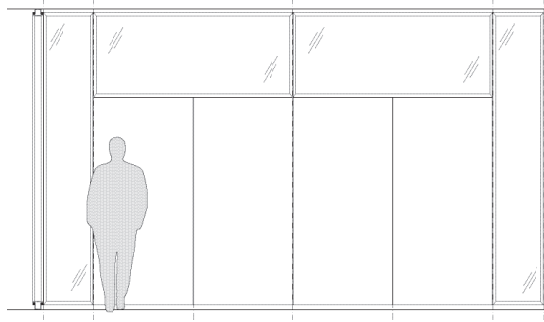
Acoustics absorbers, blinds, climate control elements, accessory systems



Corridor wall



Cross wall



Glass element



Clerestory element



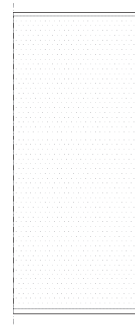
Balustrade element



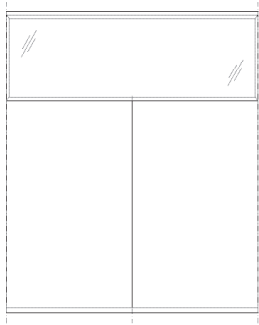
Solid panel element



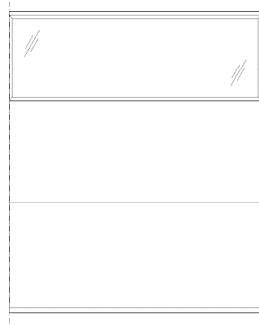
Solid panel element absorber



Glass element
2 modules



Clerestory element
horizontal division



Solid panel element
horizontal division



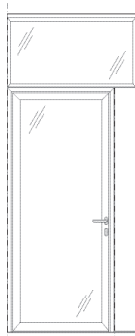
Aluminum framed door,
ceiling-height



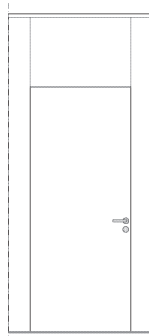
Aluminum framed door,
with clerestory

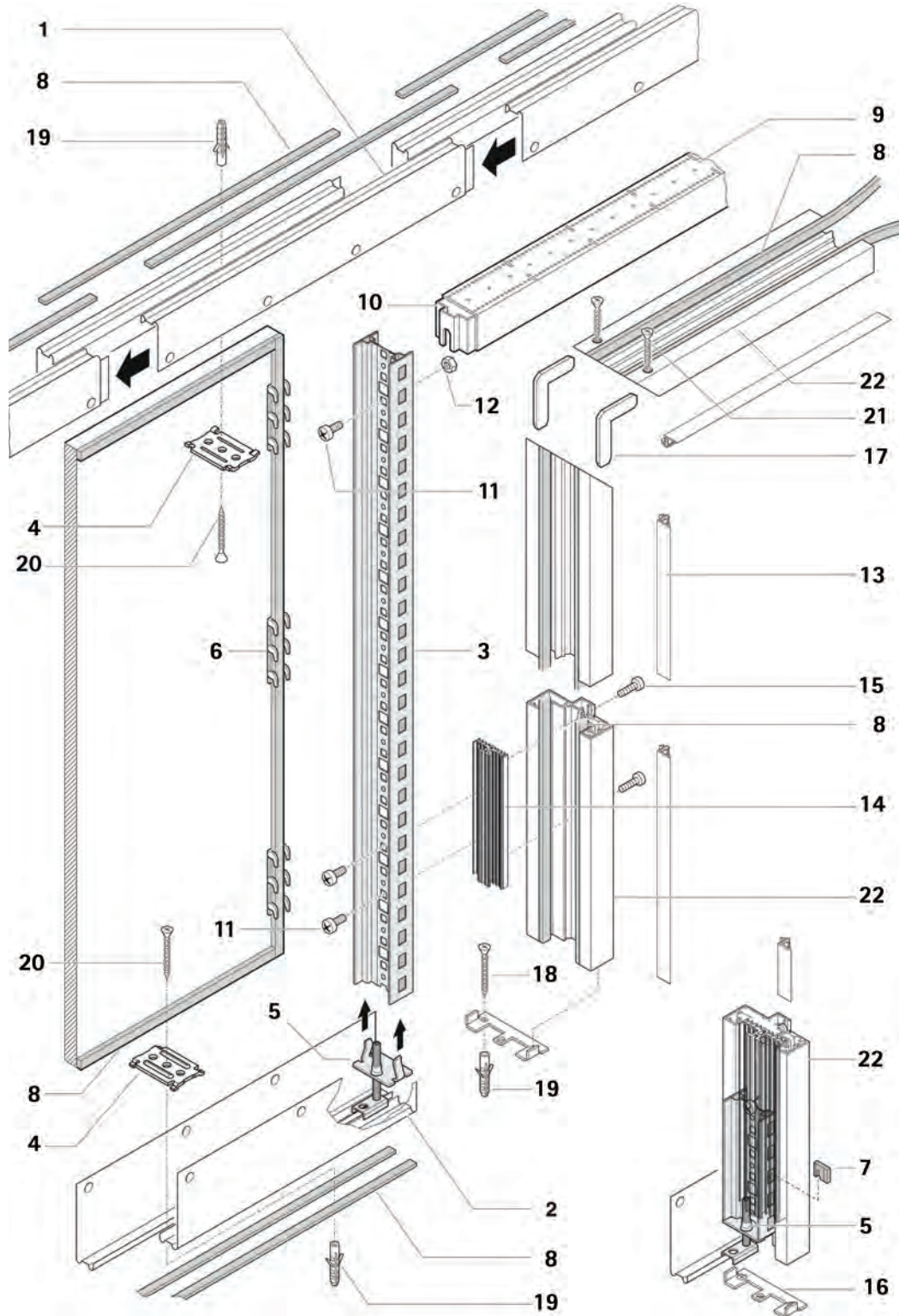


Aluminum framed door,
with clerestory and
side door panel



Solid door within
solid side and over
panel





1 Ceiling L-profil

7 Spacer

13 Door frame gasket

19 Plug

2 Floor L-profile

8 Acoustic insulation strip

14 Mounting plate

20 Anchoring screw

3 Steel mullion, RAL 7016

9 Transom

15 Screw

21 Self-tapping screw

4 U-bracket

10 Transom bracket

16 Door frame base plate

22 Aluminium door frame

5 Adjustable foot

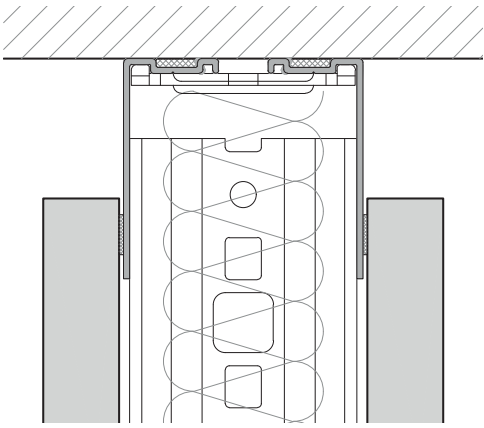
11 Bolt

17 Door frame corner bracket

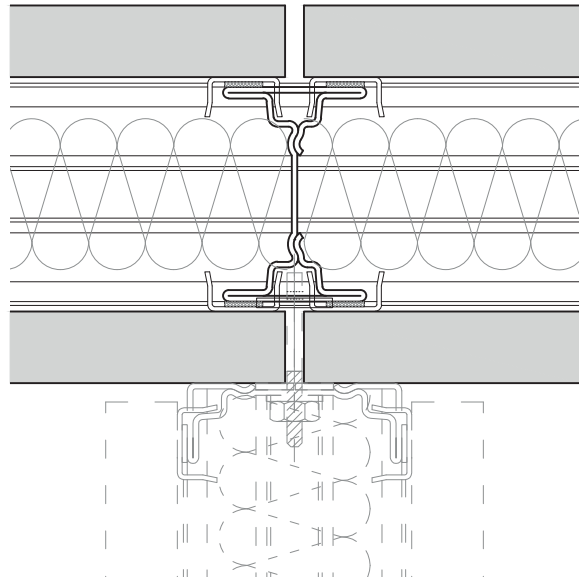
6 Suspension hook

12 Nut

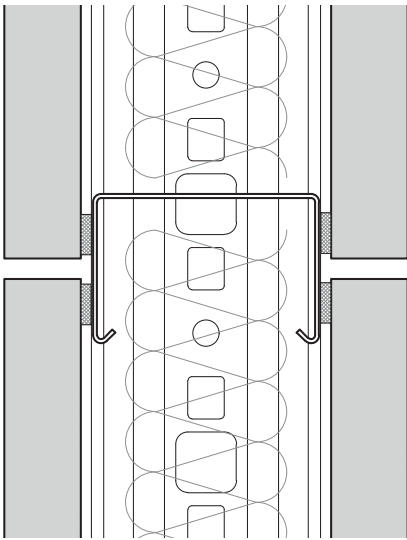
18 Anchoring screw



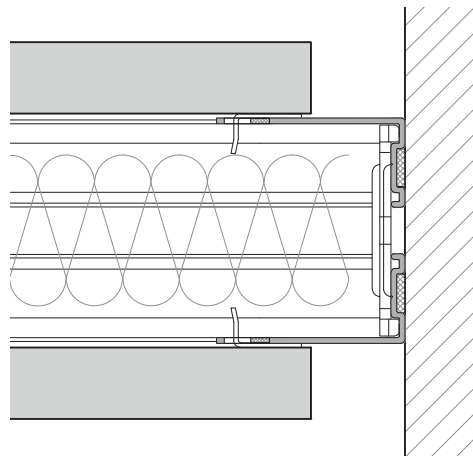
Solid wall ceiling connection



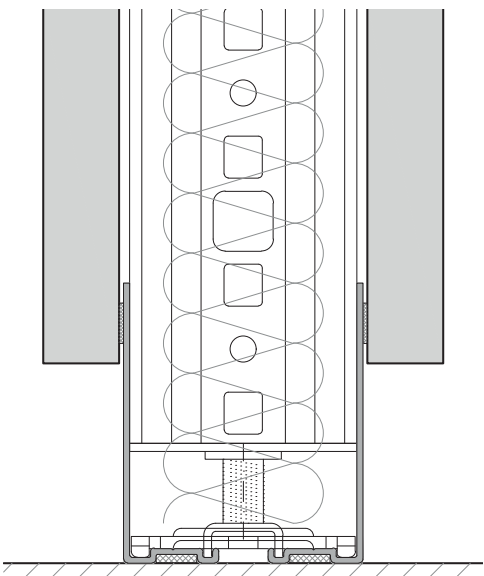
Solid wall T-junction



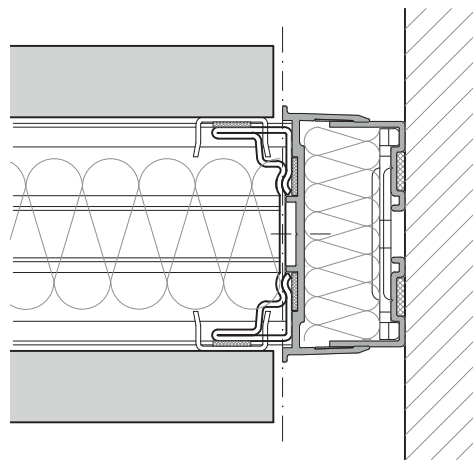
Solid wall horizontal joint



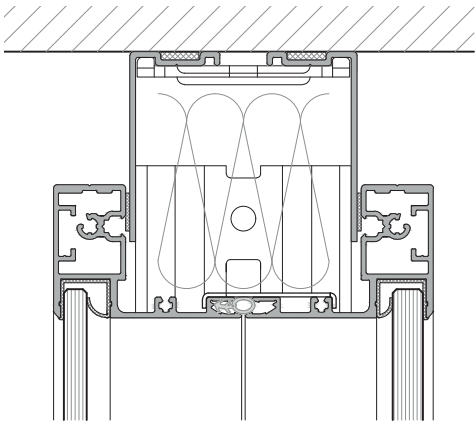
Solid wall abutment connection



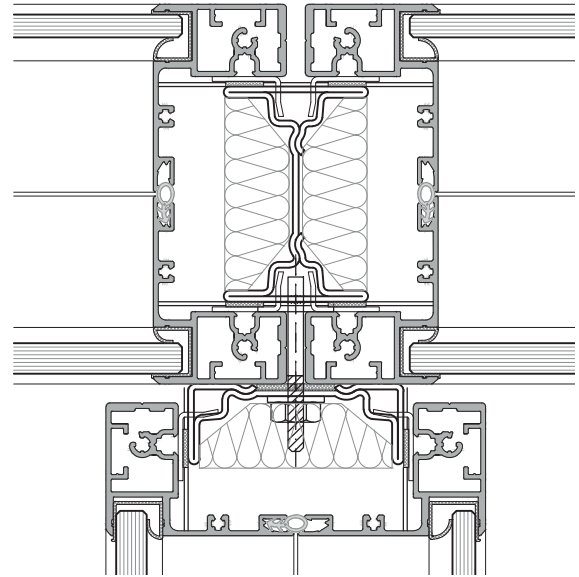
Solid wall floor connection



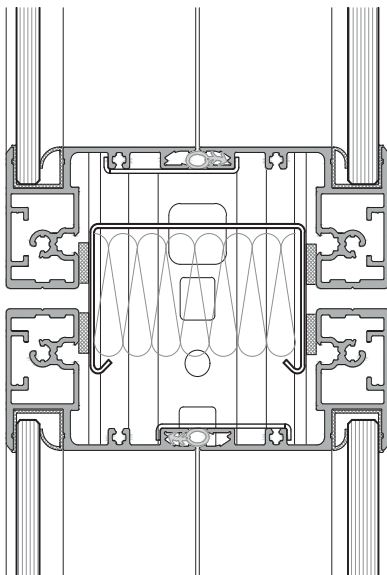
Solid wall abutment connection with lateral deflection



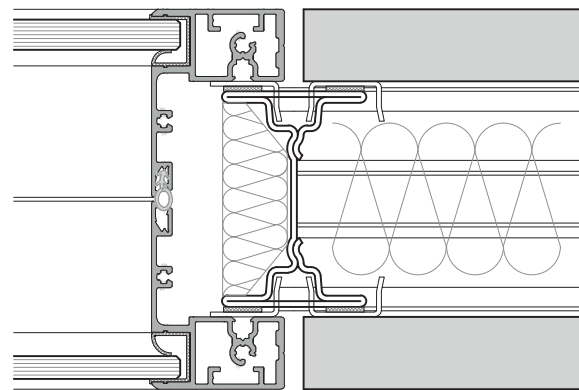
Flush glazing vertical section



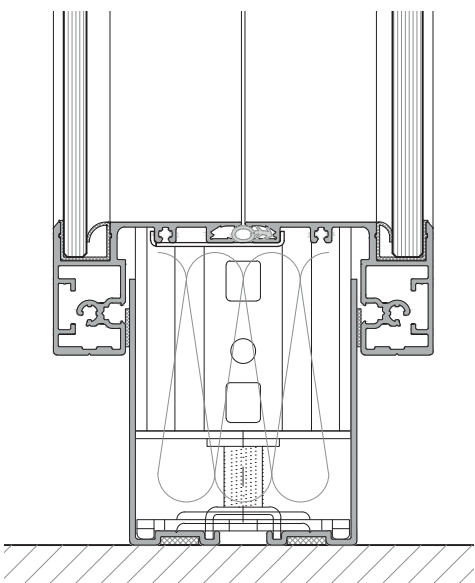
Flush glazing T-junction



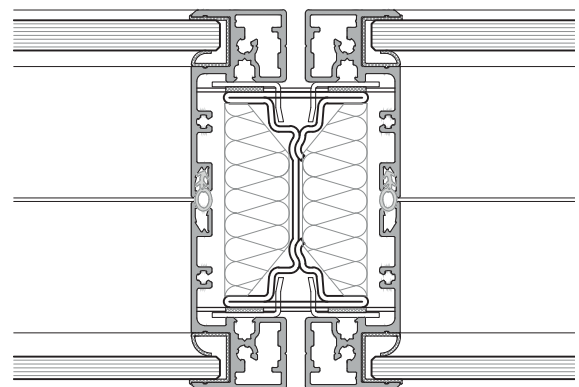
Flush glazing horizontal joint



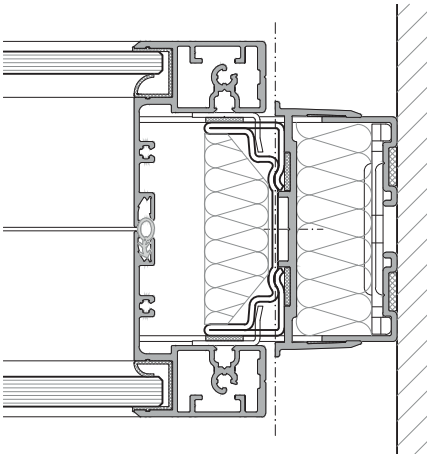
Flush glazed to solid straight connection



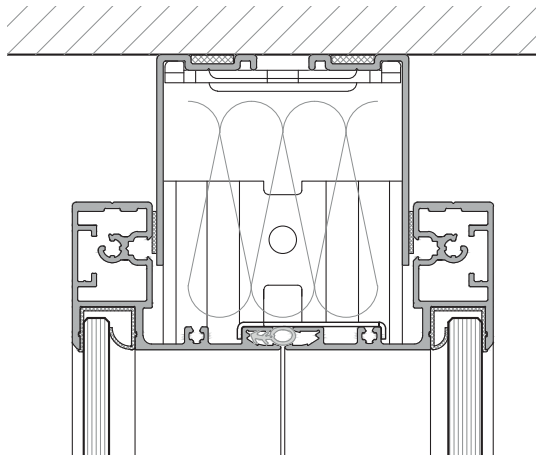
Flush glazing floor connection



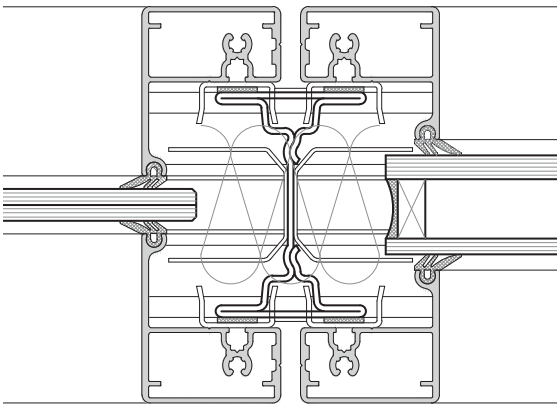
Flush glazed to flush glazed straight connection



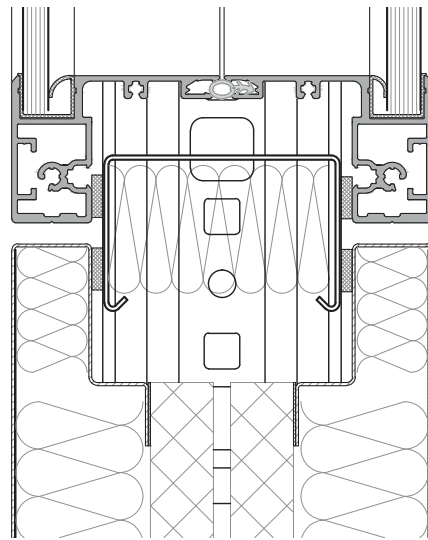
Flush glazed wall abutment connection with lateral deflection



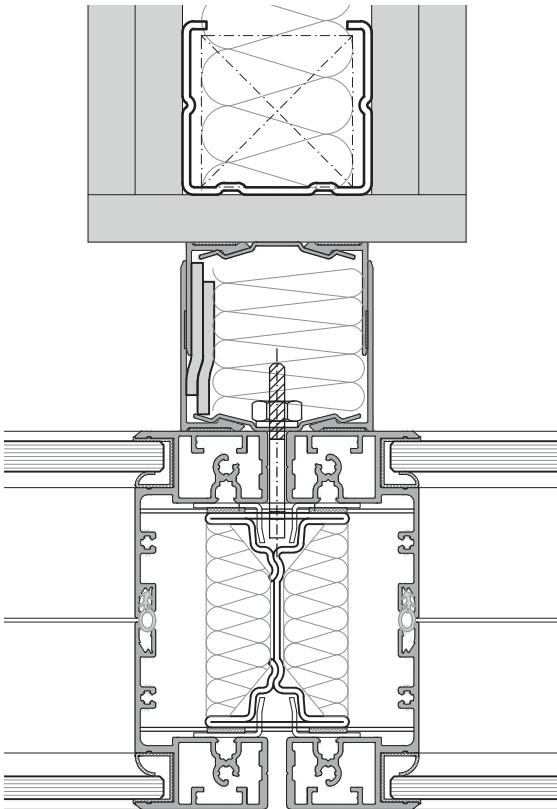
Flush glazed ceiling connection



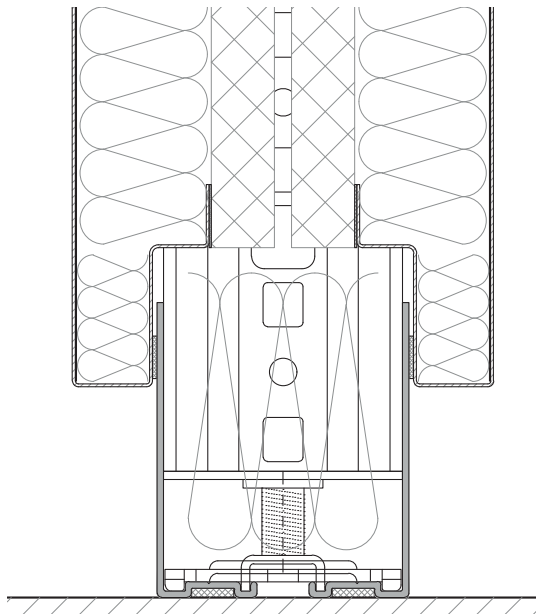
Central glazed modular grid joint



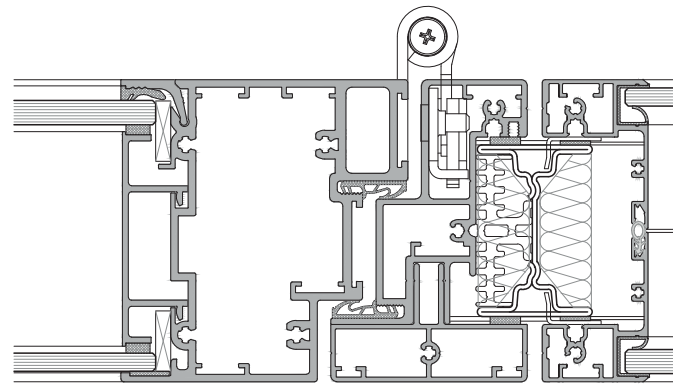
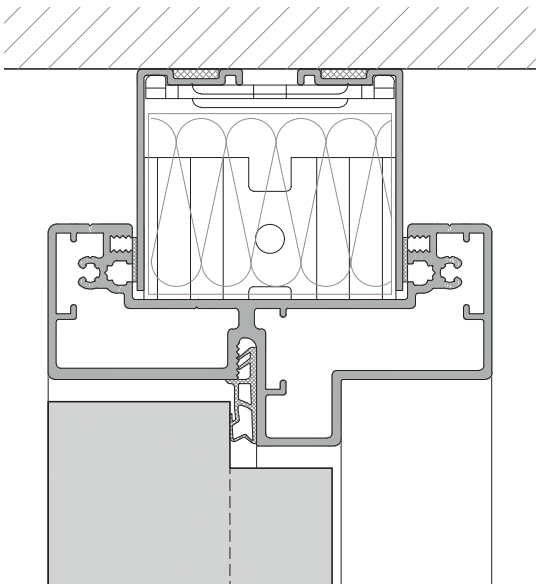
Flush glazed acoustic absorber for horizontal joint



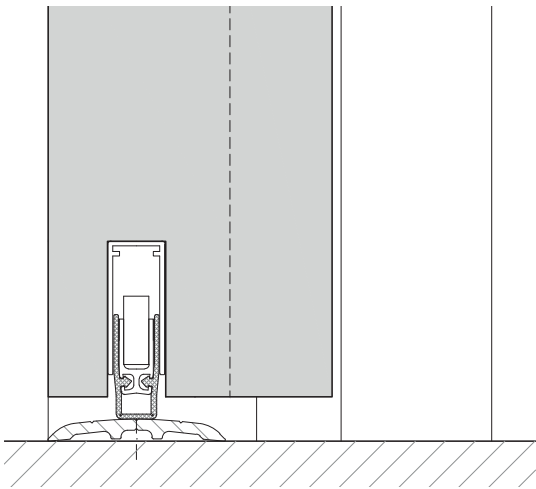
Flush glazed wall abutment connection on drywall



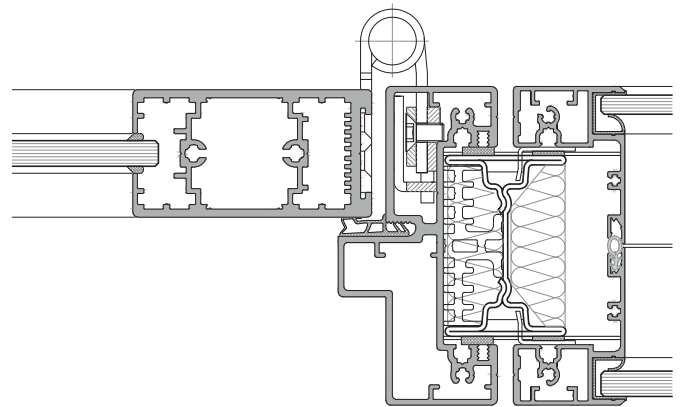
Acoustic absorber element floor connection element



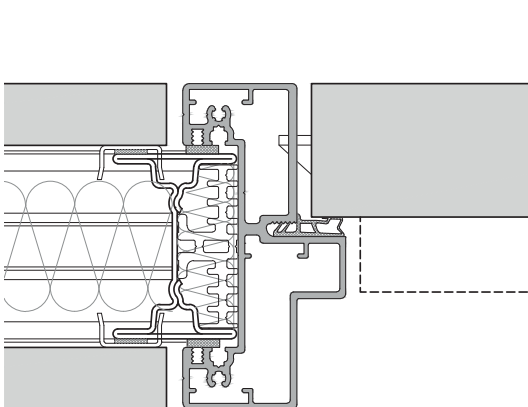
Aluminium framed double glazed 100 mm door



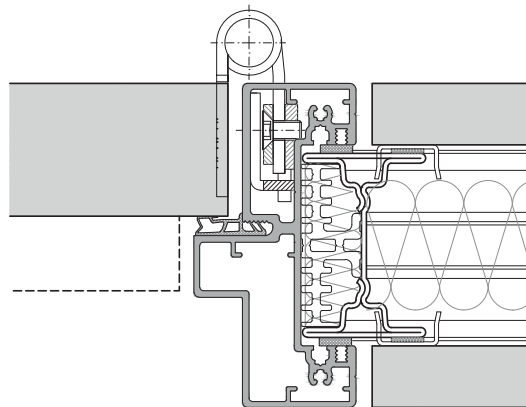
Solid door 64 mm



Aluminium framed single glazed 40 mm door



Solid door 41 mm



Partion wall	
Design	Modular and flexible partition wall system with panel design for walls and patented mullion structure. Panels and glazing elements are directly inserted into the mullion to form a structurally stable construction unit. The system is completed by high-quality aluminium door frames and door leaf options.
Wall thickness	Standard version: 100, 125 mm
Grid	Dimensions as selected and according to structural strength approvals, preferred grid sizes: 1000, 1250, 1350, 1500 mm
Heights	Flexible construction height; for heights of 3,5 m and above or for large width modules, a 125 mm wall thickness is recommended
Substructure	Mullion, powder-coated RAL 7016 matt, with suspension system for accessory elements integrated as standard
Connecting sections	Aluminium steel sections, 20 mm set back from wall face
Deflection	Solid wall: +/- 15 mm, glass wall +/- 10 mm, telescopic connection possible for increased deflection
Skirting detail	50 mm and 80 mm standard heights, intermediate dimensions possible
Ceiling detail	35 mm and 50 mm standard, other dimensions and telescopic connections are possible
Finishes	<ul style="list-style-type: none"> - Standard profiles: anodized aluminium E6EV1, steel RAL 9016, 7016 - Melamine coated chipboards, white similar to RAL 9016, light grey similar to RAL 7035 - Veneered, lacquered or fabric-upholstered boards - Powder-coated or fabric-upholstered metal panels
Glazing	Flush glazed or central glazed made from toughened safety glass and acoustic laminated glass Available as fully-glazed, balustrade or clerestory versions.
Installation	<ul style="list-style-type: none"> - Vertical and horizontal cabling facility in the wall system - Switches, sockets and control elements can be integrated into the solid walls / door side panels
Accessories	
Acoustic absorbers	Flush-fitted, high-absorption and sound-insulating acoustics absorbers available in metal or wood
Accessory elements	<ul style="list-style-type: none"> - Vertical accessory elements integrated as standard in the standard version - Flush-mounted, horizontal accessory rail can be integrated into the wall panels
Blinds	Electrical and mechanical blinds can be integrated
Climate control elements	Strähle ÜS 60 air-flow element available for integration into door side panel, high level panels or solid wall elements
Door elements	
Door frames	Aluminium door frames with high-quality 3D hinges are available for receiving a variety of door options
Door leaves	<p>Solid door: 41, 64, 78 und 100 mm door leaves Aluminium framed door: 40, 64 and 100 mm Flush bonded door: 100 mm Fully-glazed door: 10 mm toughened safety glass</p>
Sliding doors	Floor and ceiling-guided options available, framed glass sound-insulating sliding doors

Wall element	Construction / Description	Wall element Sound insulation in $R_{w,P}$		Fire prevention Sound insulation in $R_{w,P}$	
		100 mm	125 mm	100 mm	125 mm
Solid wall	19 mm melamine / gap 60 mm / 19 mm melamine	45 dB	49 dB	45 dB	49 dB
	Add.1x plasterboard panel for enhanced acoustic performance	49 dB	52 dB	49 dB	52 dB
	Add. 2x plasterboard panel for enhanced acoustic performance	53 dB	55 dB***	53 dB	55 dB
	Non-flammable material metal panel 2x plasterboard panels	51 dB	56 dB	-	-
	Special wall as dual mullion wall, cons. depth 160 mm		57 dB (max.)	-	-
Flush glazing (single glazed)	Toughened safety glass 6 mm / 8 mm	30 dB	-	-	-
	Acoustic laminated glass 8 mm	36 dB	-	-	-
Flash glazing (double glazed)	Toughened safety glass/Float 5 + 6 mm	42 dB	44 dB	44 dB**	47 dB**
	Toughened safety glass/Float 6 + 8 mm	47 dB	47 dB	47 dB**	49 dB**
	Toughened safety glass/Float 6 + Acoustic laminated glass 8 mm	49 dB	50 dB	47 dB**	50 dB**
	Toughened safety glass/Float 8 + Acoustic laminated glass 8 mm	50 dB	51 dB	49 dB**	51 dB**
	Acoustic laminated glass 8 mm + Acoustic laminated glass 8 mm	51 dB	52 dB	50 dB**	51 dB**
Central glazing	Toughened safety glass 10 mm	32 dB	32 dB	-	-
	Acoustic laminated glass 8 mm / Acoustic laminated glass 10 mm	35 dB / 37 dB	35 dB / 37 dB	-	-
	Acoustic laminated glass 16 mm	40 dB	-	-	-
	Glazing 25 mm	-	-	42 dB	

Door element	Construction / Description	Door element Sound insulation in $R_{w,P}$		2-leaved version
		100 mm	125 mm	
Solid door	VT 41 Solid door leaf 41 mm	32 dB	32 dB	
	VT 41 Sound insulating door leaf 41 mm	38 dB	38 dB	
	VT 64 Solid door leaf 64 mm	38 dB	38 dB	x
	VT 64 Sound insulating door leaf 64 mm in double-rebated frame	43 dB	43 dB	
	VT 78 Sound insulating door leaf 78 mm, concealed frame with double rebate	42/47 dB	42/47 dB	
	VT100AR Sound insulating door leaf 100 mm in double-rebated frame	42 / 47 dB	42 / 47 dB	x
Fully glazed door	GG 10 Fully-glazed door 10 mm	32 dB	32 dB	x
Aluminium framed door	AR 40 Aluminium framed door 40 mm; 8mm toughened safety glass, 8mm acoustic laminated glass, 12 mm acoustic laminated glass	32 / 34 / 37 dB	32 / 34 / 37 dB	x
	AR 64 Aluminium framed door 64 mm - 38 mm double glazed	37 dB	37 dB	x
	AR 100 Aluminium framed door 100 mm - 6 / 8 mm toughened safety glass	42 dB	42 dB	x
	AR 100 Aluminium framed door 100 mm - 6 mm toughened safety glass, 8 mm acoustic laminated glass	44 dB	44 dB	x
Structural Glazing door	SG 100 Flushed bonded door 100 mm 6 / 8 mm toughened safety glass	42 dB	42 dB	x
	SG 100.1 Flushed bonded door 100 mm lacquered, opaque version, 6 mm toughened safety glass, 60 mm; insulating wool, 8 mm toughened safety glass	45 dB	-	
Sliding door	ST 40 Framed glass sound-insulating sliding door	34 dB	34 dB	
Fireproof door	Solid door leaf certified based on german standards (Information available upon request)	37 dB	-	x
	EI30 (CE standard) Flushed bonded door 100 mm ² glazing 6 mm toughened safety glass, EI30 BS glass, 6 mm toughened safety glass	43 dB	-	x
	EI30 (CE standard) Flushed bonded door 100 mm ² glazing 6 toughened safety glass, EI30 BS glass, 8 mm toughened safety glass, lacquer opaque	47 dB		

Adjustment for calculation of arithmetic value of R_{wR} according to DIN 4109 is -2dB, door elements -5 dB

The amount to be deducted for door elements of height 2.5 to 3.0 m is -2dB, 2 leaved version -2 dB

** zus. EI30 BS-glass

*** option with gasket 56 dB

**** only with 32 mm special glass

Strähle Raum-Systeme GmbH
www.straehle.de
info@straehle.de

Gewerbestraße 6
71332 Waiblingen
T +49 7151 1714-0
F +49 7151 1714-320

Wurzelweg 5
14822 Borkheide
T +49 33845 66-0
F +49 33845 66-199

Austria
Industriestraße 9
2353 Guntramsdorf
T +43 2236 23232-0

Switzerland
Dellenbodenweg 1
4452 Itingen
T +41 61 463 1332
F +41 61 463 1333

UNITED KINGDOM PARTNER
Savile Row Projects Ltd
108-114 Golden Lane
EC1Y 0TG London
M +44 (0) 7813 652015