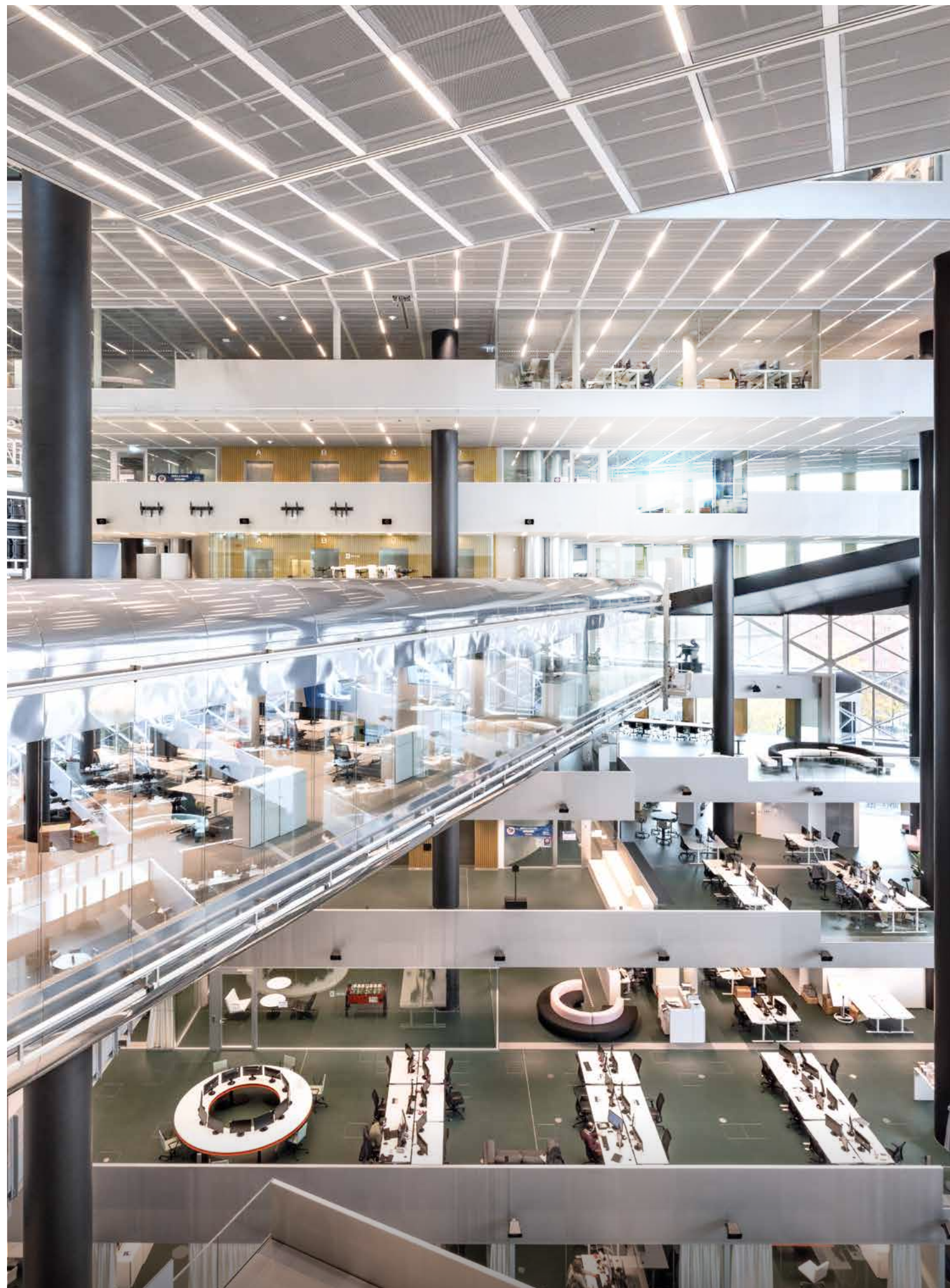


SYSTEM 3400, 3500

Axel Springer,
Berlin

case study

Case study
No. 41



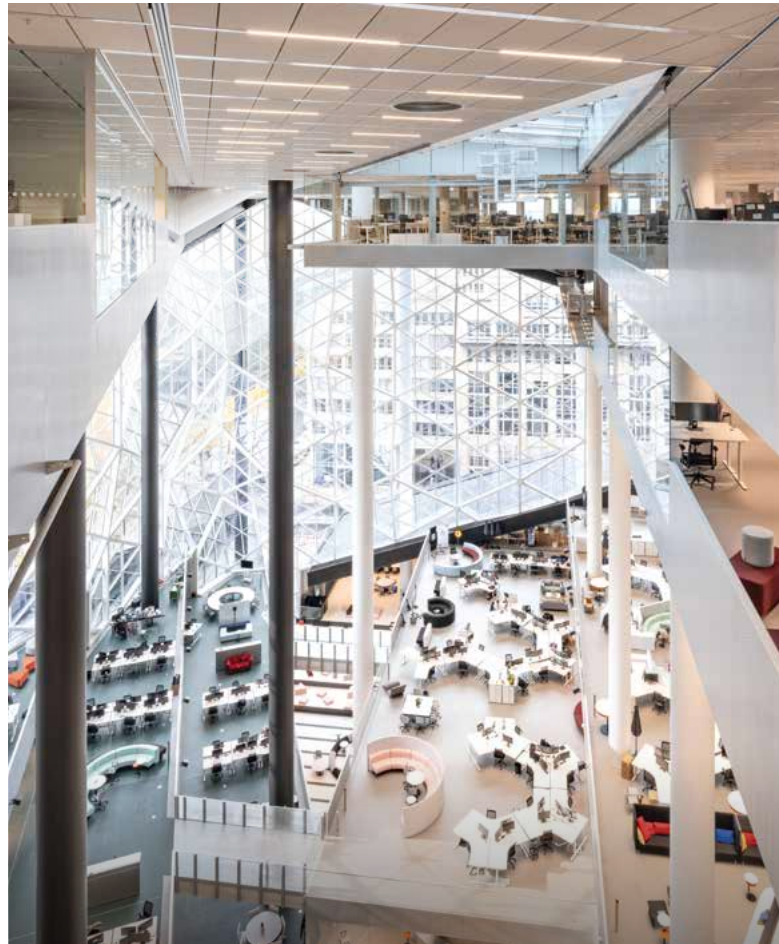
The future of working

The Axel-Springer-Neubau construction's out-of-the-ordinary architectural design represents the future of working in a digital publishing house. With 10,000 m² of floorspace, the building has a total of 13 floors and offers space for around 3500 employees. Draughted by Rem Koolhaas (OMA), this new build project provides the most modern of office and conference spaces, not to mention restaurants, TV studios and a newsroom for the WELT news channel, plus a number of meeting spaces which promote spontaneous communication and informal exchanges between colleagues.

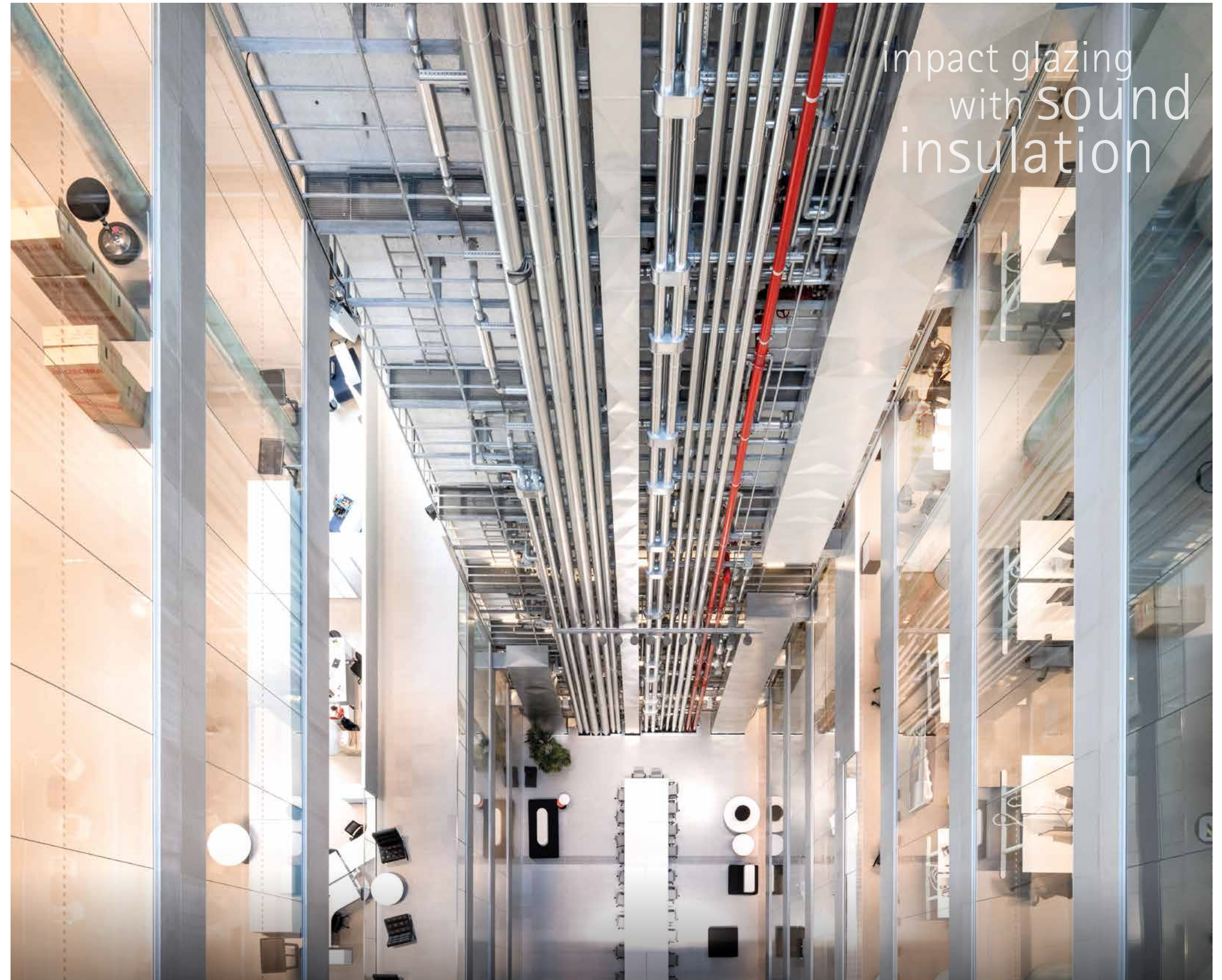


BUILDER:
Axel Springer SE
ARCHITECT:
Rem Koolhaas (OMA)
PHOTOGRAPHY:
Huber Fotodesign &
prierer.net

PARTITION SYSTEMS:
System 3400 und 3500
DOOR SYSTEMS:
Solid door, Aluminium
framed door
ACOUSTIC SYSTEMS:
Wall-mounted
absorber 7100

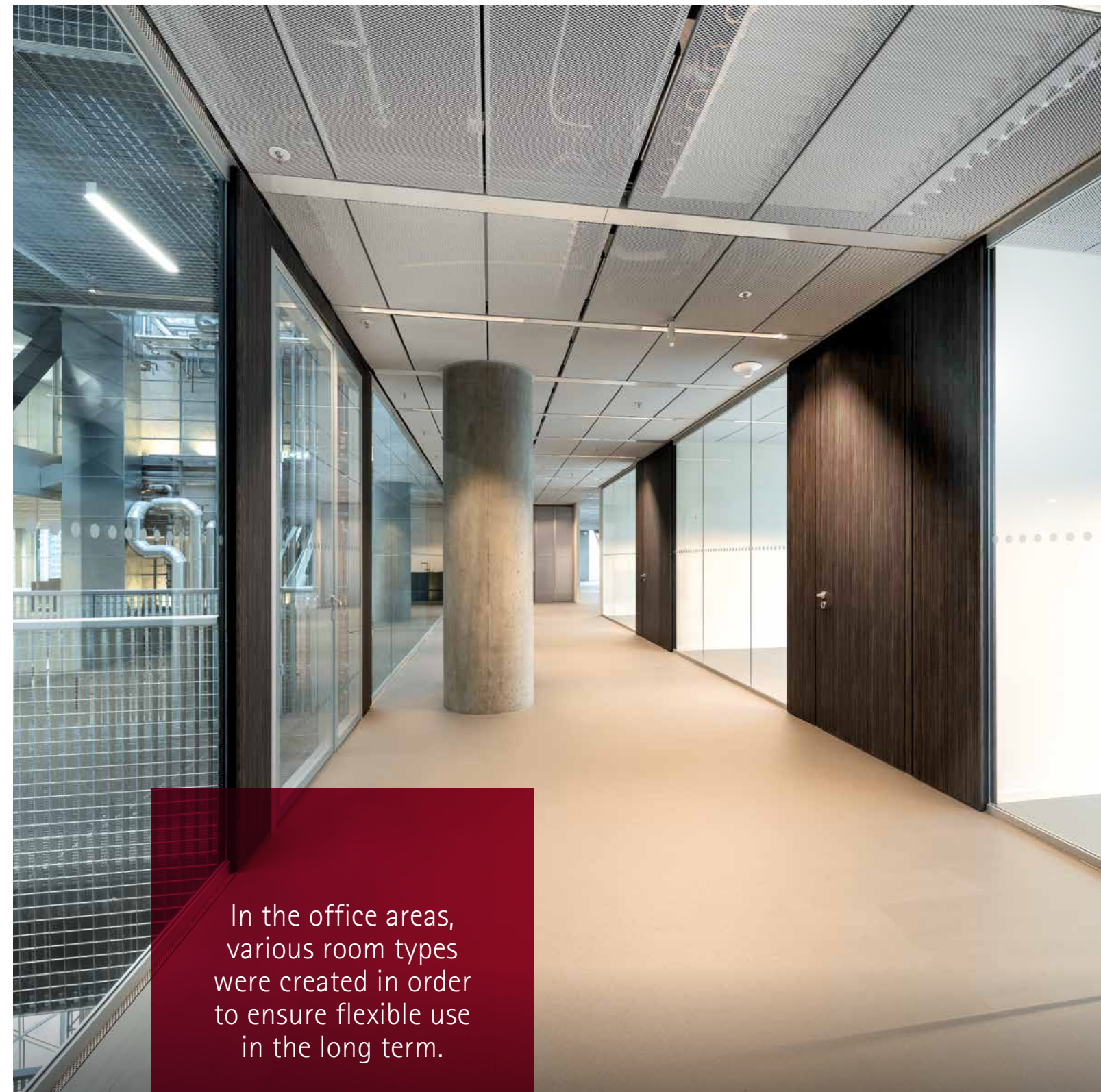
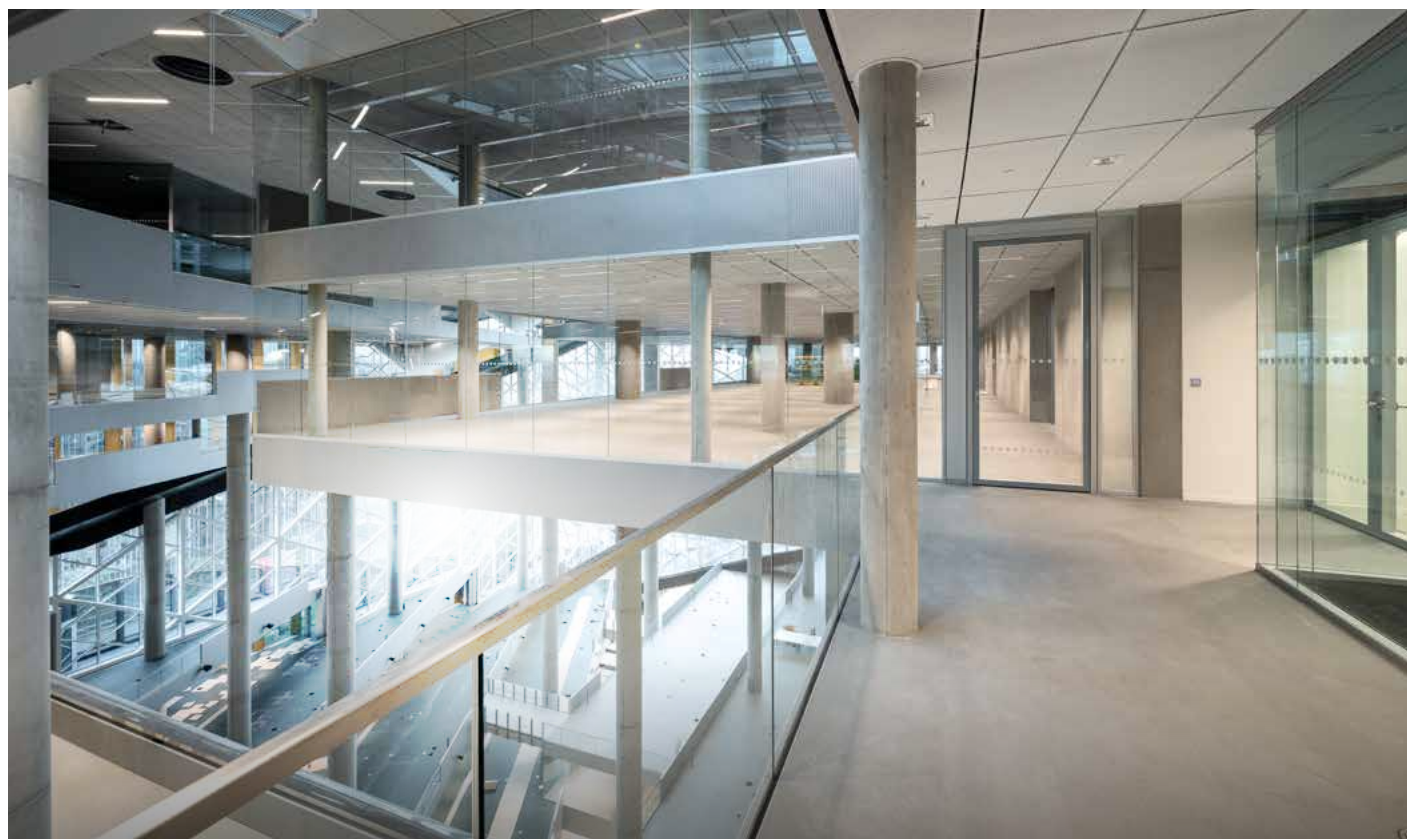


A highlight inside the building is the 45-metre-high atrium which features terraces and bridges that connect different parts of the building. The new working worlds of Axel-Springer follow the New Work philosophy and are guided by three principles: "human", "space" and "technology".

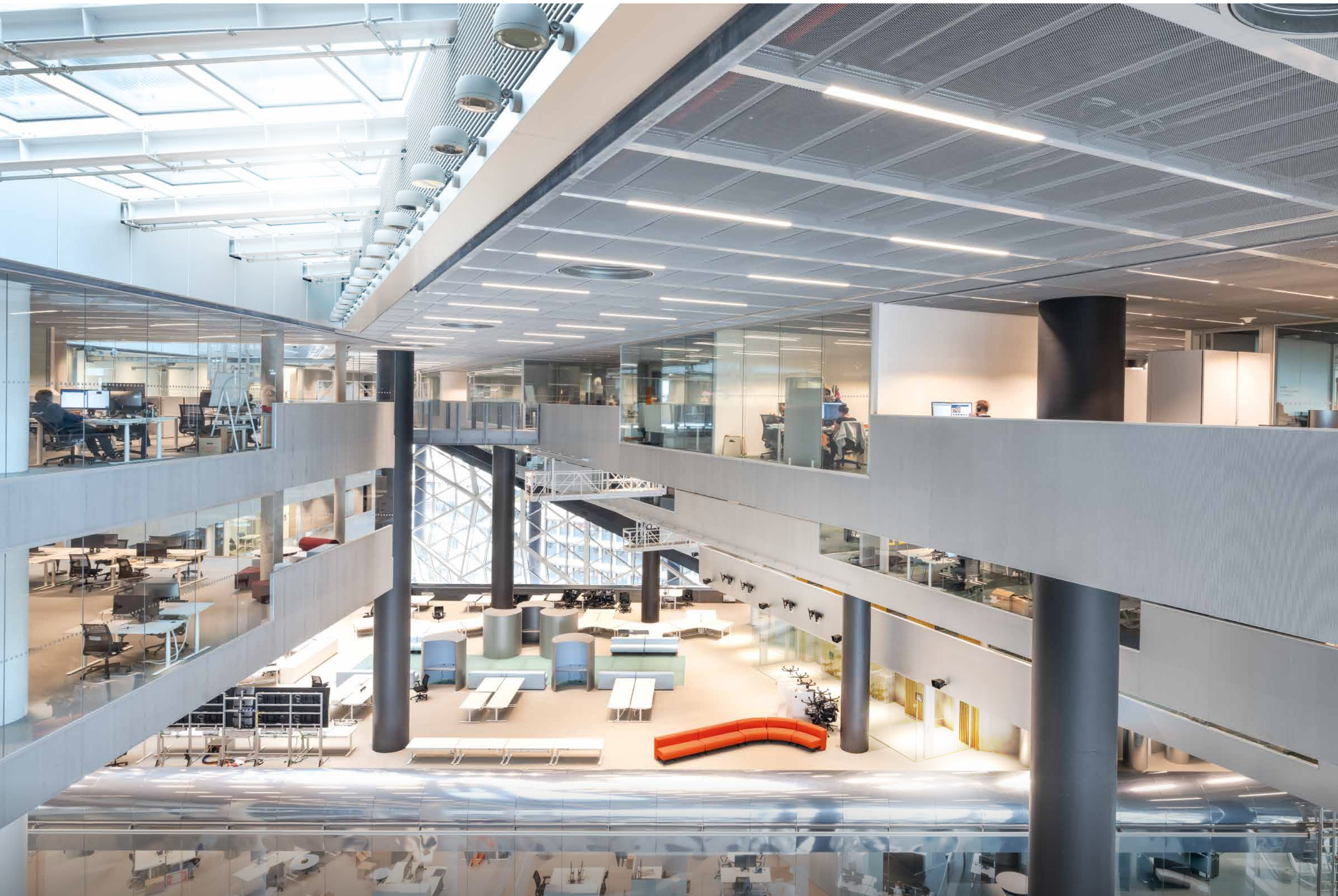


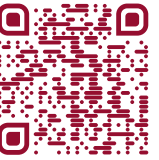
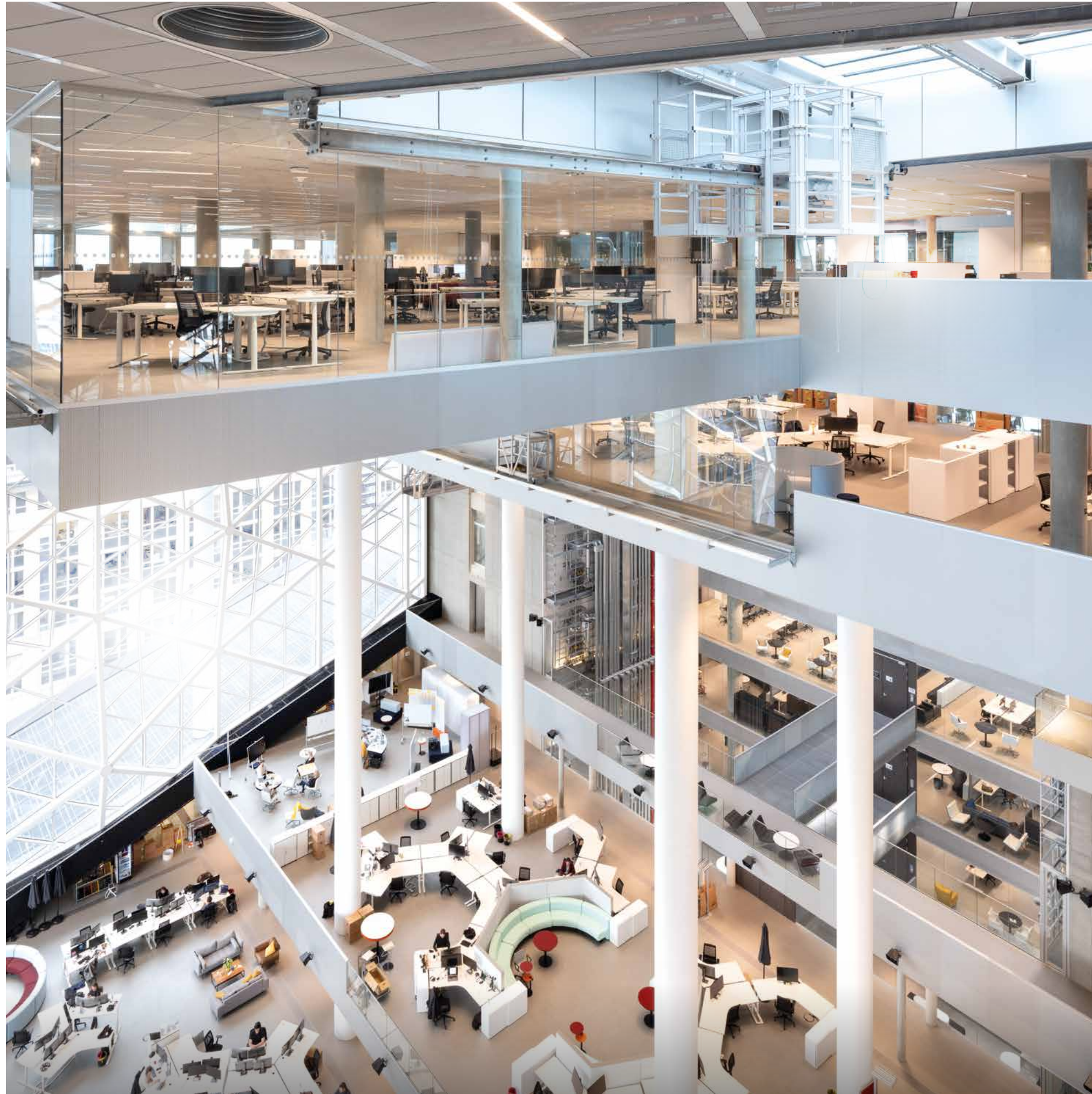
Maximum transparency without vertical mullions

Glass partition walls from Strähle are used both in the atrium and in all office areas. Flooded with light, the atrium is secured by means of anti-fall glass walls and ensures some pretty spectacular views out onto the striking façade of the building. Depending on noise insulation requirements, the all-glass walls of the System 3400 and System 3500 are available with either single or double glazing. With no vertical profiles, both systems offer maximum transparency and their design has been minimalistically reduced.



In the office areas,
various room types
were created in order
to ensure flexible use
in the long term.





Scan the
QR-Code to find
out more about
the project.

Full doors with a range of wooden surfaces as well as different glass door variants were combined in accordance with the respective design and noise insulation requirements. Some of these also feature integral flow ducts. For the Axel-Springer-Neubau project, Strähle planned, manufactured and installed a total of 8000 m² of glass partition walls, around 280 doors and more than 1500 m² of wall absorbers to improve acoustics.



Strähle Raum-Systeme GmbH
straehle.de
info@straehle.de

GERMANY
Gewerbestraße 6
71332 Waiblingen
T +49 7151 1714-0

Wurzelweg 5
14822 Borkheide
T +49 33845 66-0

AUSTRIA
Industriestraße 9
2353 Guntramsdorf
T +43 2236 23232-0

SWITZERLAND
Dellenbodenweg 1
4452 Itingen
T +41 61 463 1332

GREAT BRITAIN
Savile Row Projects
108-114 Golden Lane
London EC1Y 0TG
T +44 203 701 8008