

Projectdocumentation No. 22
System T | System 3400

Office Building Scala
5S AG, Stuttgart





Creative interior design in the triangle

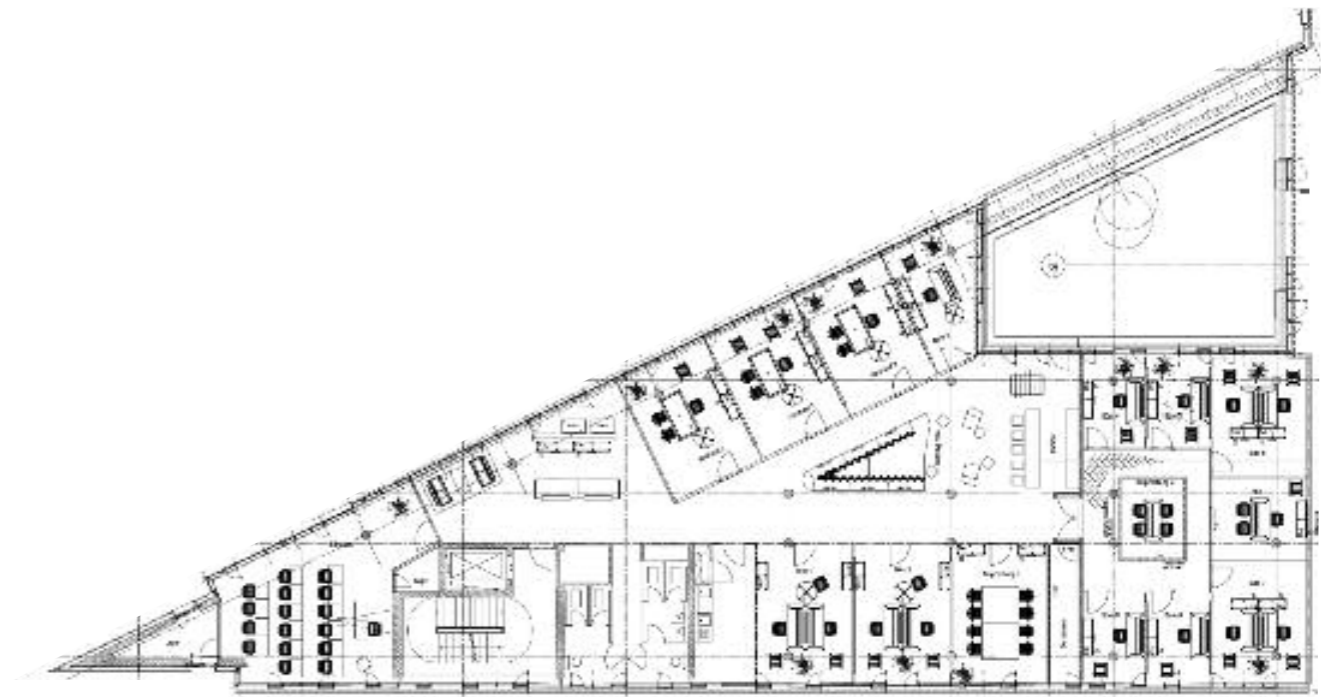
The Scala building with its triangular shape is not only an urban planning highlight in the heart of Stuttgart, but also an inspiration for contemporary interior design. This is demonstrated in the new office spaces of 5S AG. The newly established IT company develops energy performance software and operates an internet portal on the subject of energy efficiency.



Project Figures:

- Client: 5S AG, Stuttgart
- Architect: Hascher Jehle Architektur, Berlin
- Interior Design: Högner GmbH, Nuremberg
- Partition Walls: Executive offices - System T,
Software development department - System 3400

Thanks to the decision for glass partition walls, providing ample day light to the centre of the plan, the triangular shape of the building can be experienced also from the inside. The one and two-person offices are organised around a central triangular communal zone. The layout promotes both concentrated working and spontaneous communication between the employees.





The formal contrast between the natural timber surfaces and the flush glazing is what makes System T distinctive. Clear lines, a balanced colour composition and the space enlarging effect it creates with its flush appearance – that's how easy a feel-good atmosphere can be created.



System T

Symbiosis of wood and glass

With an eye to the sustainable nature of the materials, 5S AG decided on the newly designed System T glass partition for the directors' offices. The system cleverly combines the sustainable and CO₂-neutral material wood with glass to form a new partition wall concept.

The design of System T is distinguished by the flush fitted glazing and its combination with very slender timber sections (only 36 mm). Glazing can be applied either on one or on both sides. The innovative design is a distinctive counterpoint to conventional constructions in steel and aluminium.



Project details System T

- Surface-flush glass partition with veneered plywood substructure
- Finish: American walnut veneer
- Glazing: one layer of 8 mm toughened safety glass
- Door: Glass door, 10 mm toughened safety glass, aluminium frame fitted flush into wall
- Module dimensions: 1050 mm x 2900 mm
- Fully Glazed corner detail



System 3400
Minimalist single glazed wall
system for maximum transparency

In the software developer area, where quiet and concentration are paramount, the System 3400 partition wall system was used. The all-glass system requires no vertical steel posts and its detailing is reduced to a minimum. This allows a very high transparency. Basis of the system is a flexible aluminium floor and ceiling glazing profile. It can house different glass thicknesses, such as toughened or laminated safety glass from 8 to 16 mm, or double glazing with up to 26 mm thickness. In this project 10 mm toughened safety glass in combination with full height glass doors was used.



Project details System 3400

- Flexible glazing system for glass partition walls
- Finish: anodized aluminium E6EV1
- Glazing: 10 mm toughened safety glass
- Full height glass doors



Pure aesthetics: The transparent design of System 3400 creates a completely new perception for space.

Scala, Stuttgart | System 3400



Quality meets Design.

Strähle Raum-Systeme GmbH

www.straehle.de
info@straehle.de

Gewerbestraße 6
71332 Waiblingen (Stuttgart)
Tel.: 00 49 (0) 71 51.17 14 - 0
Fax: 00 49 (0) 71 51.17 14 - 320

Wurzelweg 5
14822 Borkheide (Berlin)
Tel.: 00 49 (0) 338 45.66 - 0
Fax: 00 49 (0) 338 45.66 - 200

Austria:
Kühweg 22
A-9612 St. Georgen
Tel.: 00 43 (0) 42 56.20 126
Fax: 00 43 (0) 42 56.20 126 - 20

Switzerland:
Sales Office
Auf dem Wolf 39
CH-4052 Basel
Tel.: 00 41 (0) 61.463 13 32
Fax: 00 41 (0) 61.463 13 33

 **Strähle**
Raum-Systeme