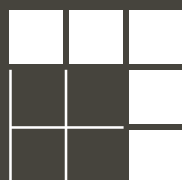
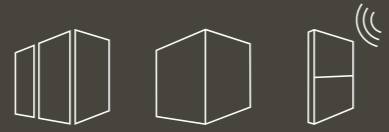
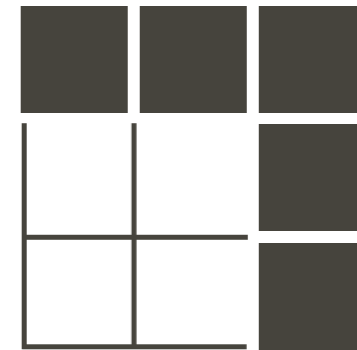


# Spaces





*The  
specialist*



# *The specialist*

Strähle is the specialist for partition wall, room-in-room and acoustic systems. Quality, co-operation, partnership and reliability have determined our working methods for over 100 years. As a manufacturer and specialist for interior design, we consider ourselves connected with the handcrafting tradition. Tailor-made solutions for new office worlds are developed in a joint process together with architects, planners and customers.

For the layout you need today. And tomorrow.

# Index

- 06 VfB Stuttgart Porsche Tunnel Club,  
STUTTGART
- 12 Profol GmbH,  
HALFING
- 18 St. Oberholz,  
BERLIN
- 24 ALTO,  
DÜSSELDORF
- 28 QAware,  
MÜNCHEN
- 32 Am Tacheles,  
BERLIN
- 40 Lohsepark,  
HAMBURG
- 46 Kronprinzbau,  
STUTTGART
- 52 Hilti Innovationszentrum,  
KAUFERING NEAR MÜNCHEN
- 58 Kienbaum Consultants International,  
BERLIN
- 62 Sparkasse Trier,  
TRIER
- 66 Volksbank Freiburg,  
FREIBURG
- 70 Satellite Office,  
STUTTGART
- 74 Bund Deutscher Architektinnen und Architekten,  
BERLIN
- 78 Endress + Hauser Flowtec AG,  
REINACH
- 82 Oldenburger Volksbank,  
OLDENBURG
- 86 AstraZeneca,  
HAMBURG
- 92 Roche Bau 2,  
BASEL
- 98 Credion,  
HAMBURG
- 102 Scout24 SE,  
BERLIN
- 108 Hoffmann Logistikzentrum,  
NÜRNBERG
- 112 Quartier Belvedere Central 2,  
WIEN
- 118 Drees & Sommer,  
MÜNCHEN
- 122 myhive,  
WIEN - AM WIENERBERG
- 126 HPP Architekten,  
DÜSSELDORF
- 130 myhive,  
WIEN - UNGARGASSE
- 136 Combine Office,  
BERLIN
- 140 intersoft GmbH,  
HAMBURG



# 01

STUTT GART

## *VfB Stuttgart Porsche Tunnel Club*

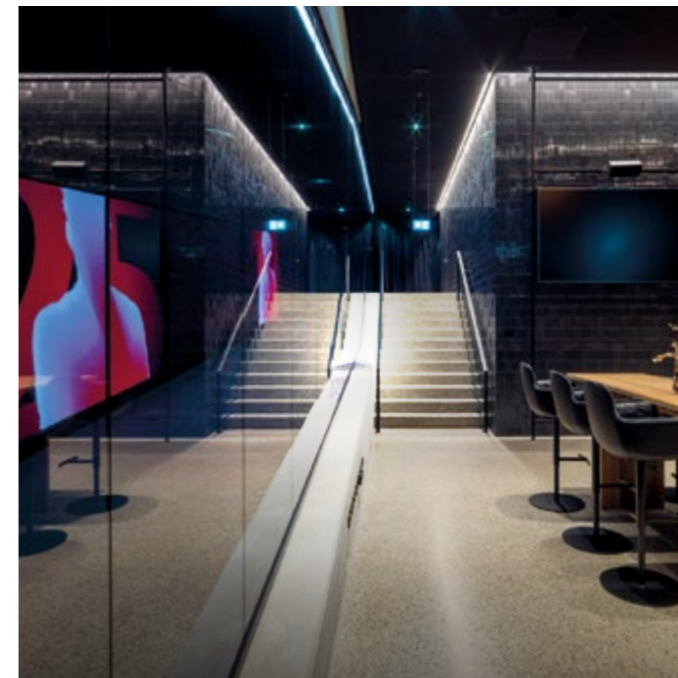
ARCHITECT:  
asp Architekten

CLIENT:  
VfB Stuttgart/  
Stadion NeckarPark GmbH & Co. KG

SYSTEM:  
3400



*An architectural paradox: while the glass partition wall acts as a physical divide, it still conveys a sense of being in the thick of the action.*



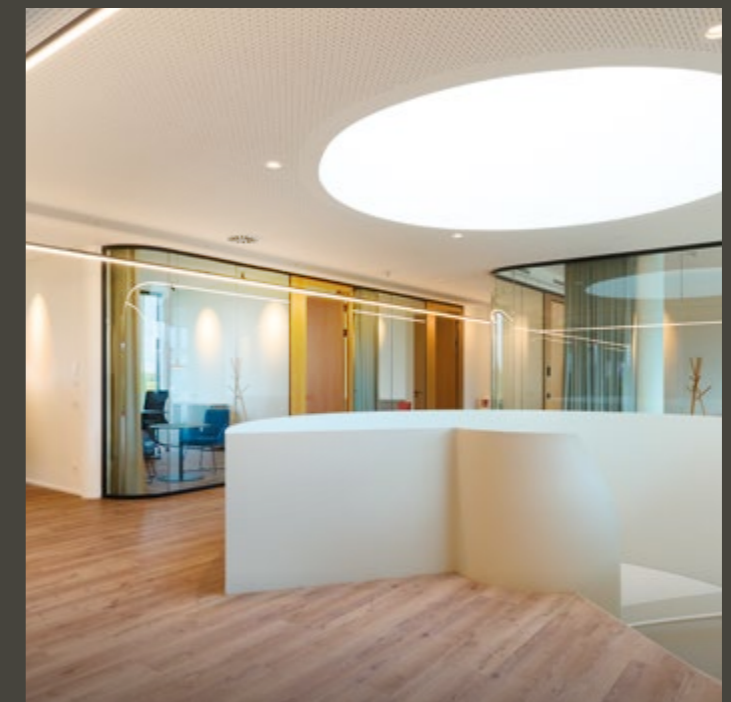
The technical precision of the Porsche Tunnel Club, designed by asp Architekten, is impressive: over 90 linear metres, the height of the System 3400 all-glass construction varies between 2.8 and 4 metres. The curving 16 mm laminated safety glass and black profiles are elegant, yet dynamic. Thanks to the one-way reflective coating, fans enjoy an unobstructed view, while the players can maintain their focus.





*Design driven by  
contrasting materials*

The refined blend of materials, including curved glass, black profiles and reflective film, creates the exclusive look that elevates the Porsche Tunnel Club into a show-piece of contemporary sports architecture. This sophisticated combination is more than just a simple partition wall – it is a unique spatial experience.



02

HALFING

*Profol  
GmbH*

ARCHITECT:  
TKEZ Architekten

CLIENT:  
Profol GmbH

SYSTEM:  
3400



*Precise room layouts for a high-tech company*

The new technology centre appears striking and modern, while maintaining its connection to its surroundings. The System 3400 all-glass construction floods the space with light for a transparent work environment as well as excellent acoustic performance.

The curved glass walls add dynamism to the spaces, while black profiles create an exciting contrast with the cosy materials and colours. The clear-cut partitioning supports collaboration, but also promotes focus – modern, functional, future-oriented.



# 03

BERLIN

## *St. Oberholz*

**ARCHITECT:**

Freiraum in der Box and  
Fourrichon Architecture

**INTERIOR DESIGN:**

Büro Pankrath und St. Oberholz

**CLIENT:**

Friedrichshöfe GmbH  
Alexander Jurkowitsch  
Carolina Mojto

**CIRCULARITY**

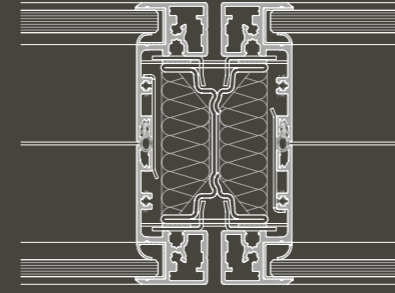
**PARTNER:**

Concular

**SYSTEM:**

2000






*System 2000  
flush-mounted  
frame glazing*

*Pioneering  
creativity  
meets lived  
sustainability*

St. Oberholz is setting new benchmarks – not just in co-working, but also when it comes to the circular economy. Every detail of its new site is a testament to circularity: from vintage furniture and second-hand plants to the collaboration with Concular for recycled construction materials. Here sustainability is real – not just a claim.

Around 80 linear metres of Strähle partition walls were dismantled from a site in Stuttgart and reinstalled across the 650 m<sup>2</sup> floor space – virtually unblemished and ready for a second chance at life.





*The modular  
System 2000 enables  
flexible room solutions  
in a resource-friendly  
way. A powerful  
flagship for circular  
interior design.*

## 04

DÜSSELDORF

*ALTO*

ARCHITECT:

BM + P Generalplaner, Köln

CLIENT:

IMMOFINANZ Medienhafen GmbH

SYSTEM:

2000

*Powerful vision,  
flexible spaces*

The 16-floor ALTO high-rise building dominates Düsseldorf's Medienhafen district with its impressive elegance. Versatile workspaces, each optimally adapted for different unique requirements, are spread across the total rental space of around 21,000 m<sup>2</sup>. This innovative co-working concept promotes not just flexibility, but also a strong sense of community. ALTO is rethinking the office – with thoughtful service provision, lounges, focus rooms and open kitchen areas.





*Polygonal glass,  
flush-fit doors and  
modular systems create  
future-proof spaces –  
perfect for dynamic  
working concepts.*



Ultimate comfort thanks to intelligent room solutions. The Strähle partition wall systems set benchmarks in function and design. They meet the most stringent soundproofing and fire protection standards and, with their polygonal glass design, blend seamlessly into the overall concept.

# 05

MÜNCHEN

## QAware

CONCEPT &  
INTERIOR DESIGN:  
loop\_creating places

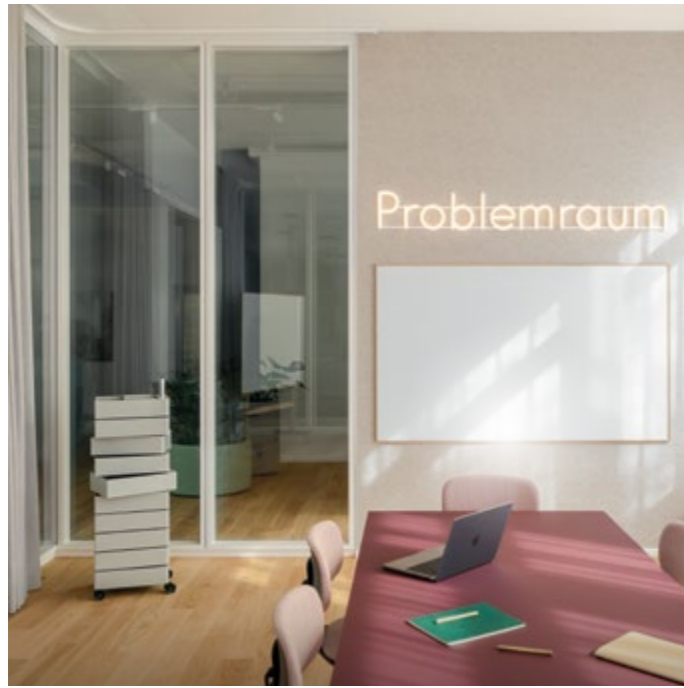
CLIENT:  
QAware GmbH

IMPLEMENTATION  
PLANNING:  
Vey Innenarchitekten

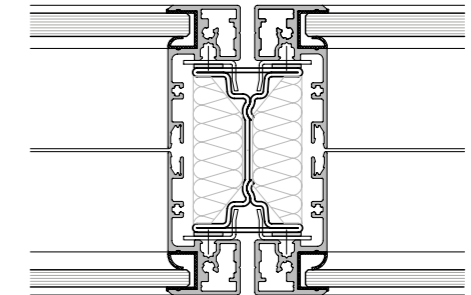
SYSTEM:  
2000

Customised, open, inspiring.  
The redefined spaces at QAware in München go far beyond classic workstations. A diverse range of offices, meeting rooms and lounge areas promote hybrid working and take individual requirements seriously.





*The different colours, shapes and furnishings are an open invitation to try new things – for greater identification, focus and community.*



*System 2000  
flush-mounted frame glazing*

### *The powerful impact of light and space*

The glass partition walls of the Strähle System 2000 harmonise perfectly with the warm, contemporary interior. The internal mullion construction and extremely soundproof 100 mm doors marry elegance with function, providing oases of calm amid the open-space configurations.

06

BERLIN

# *Am Tacheles*

ARCHITECT:  
Herzog de Meuron, Aukett + Heese

INTERIOR DESIGN:  
Gensler

CLIENT:  
pwr development GmbH

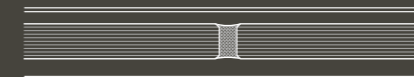
SYSTEM:  
2300/3500





### *Urban statement with character*

In the heart of Berlin lies an inspiring place for modern working and living – the AM TACHELES urban quarter. Two architecturally striking buildings form a spectacular gateway between Friedrichstrasse and Oranienburger Strasse. In a working environment that meets the challenges of the future, the office spaces are open, suffused with light and equipped with state-of-the-art digital infrastructure.



### *Distinctive transparency meets functionality*

In the rental spaces, Strähle's highly soundproof, double-glazed System 3500 strikes the perfect balance between openness and discretion. The flush System 2300 structural glazing system, partly installed as a fire barrier, creates private quiet zones for meetings and video calls. Black profiles and the corporate design decals of the individual tenants add stylish accents and lend the interior a contemporary, industrial feel.





*The high design quality of the black profiles, flush glass walls and individual decals give the site a distinctive industrial look.*



The new Wintershall Dea headquarters by the Lohsepark in Hamburg is where teamwork and forward-looking architecture come together. Eight floors of multi-space offices, including creative hubs, meeting areas and focus rooms, promote dynamic and diverse working styles – all designed by the people who work there.

# 07

HAMBURG

## *Lohse- park*

ARCHITECT:  
Wandel Lorch Götze Wach

CLIENT:  
Müller-Spreer AG

SYSTEM:  
2300/Kubus II



*Elegantly partitioned, harmoniously designed. Strähle glass walls and modules in the black anodised System 2300 have been installed throughout.*



Kubus II creative hubs provide the perfect quiet zone for every work scenario – whether as a two-person office or a meeting room. Arranged in rows or as islands within the open space, they blend harmoniously into the warm environment of glass and wood. What's more, the building also meets the strict environmental standards of the Hafencity Platinum Ecolabel.





08

STUTTGART

# *Kronprinz- bau*

ARCHITECT:  
Ohlf Schoch Architekten

INTERIOR DESIGN:  
Ippolito Fleitz Group – Identity Architects

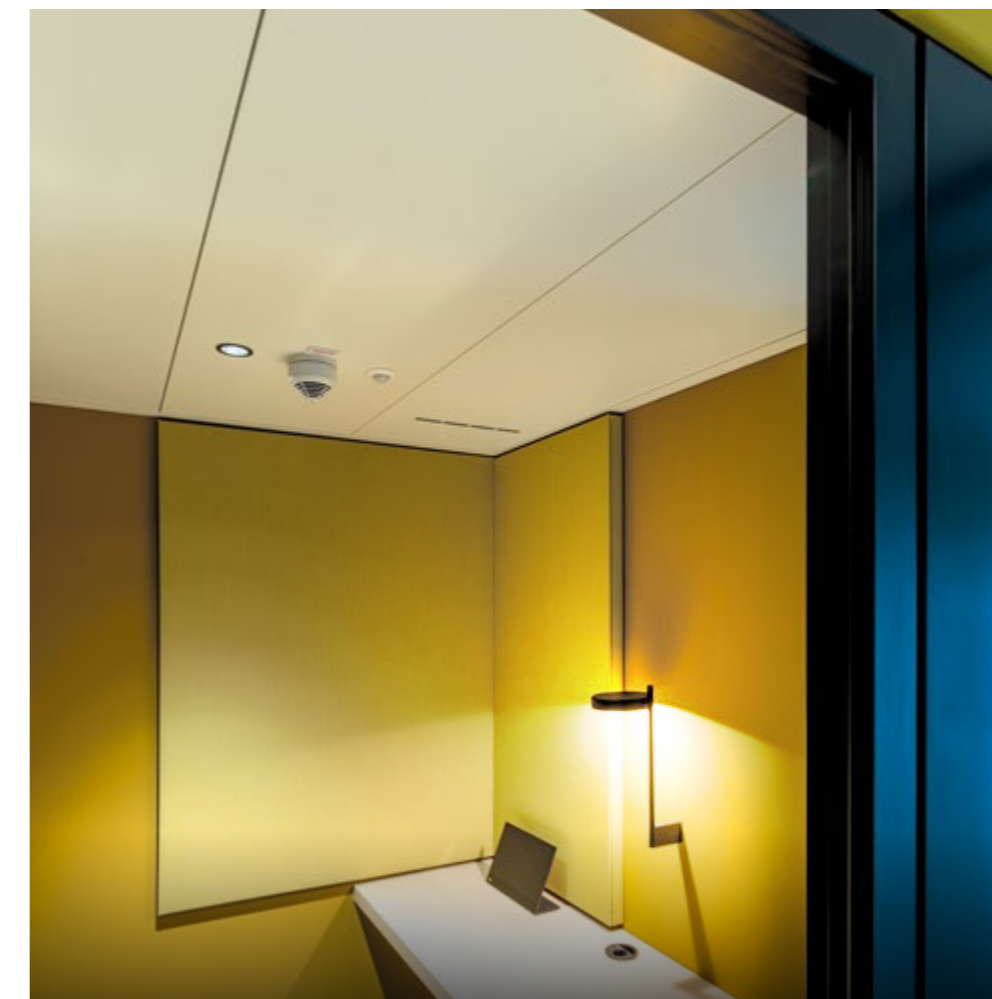
CLIENT:  
Hines Immobilien GmbH

SYSTEM:  
2300



## *A visionary restoration*

Located in the middle of the Königstrasse, the Kronprinzbau building is living proof that it is possible to create a state-of-the-art working environment within an existing building. The office spaces of a consulting company were redesigned in 2023 and demonstrate how partition wall systems can be used to renovate spaces in a sophisticated and cost-effective way. The double-glazed structural System 2300 was chosen for its reflective glass look, modular design and extreme soundproofing capabilities.





*Partitioning  
based on the patented  
Strähle mullion  
construction with  
integrated suspension  
units – functional,  
flexible, future-proof.*



09

KAUFERING  
NEAR MÜNCHEN

# *Hilti Innovations- zentrum*

GENERAL PLANNING:  
Carpus+Partner AG

CLIENT:  
Hilti

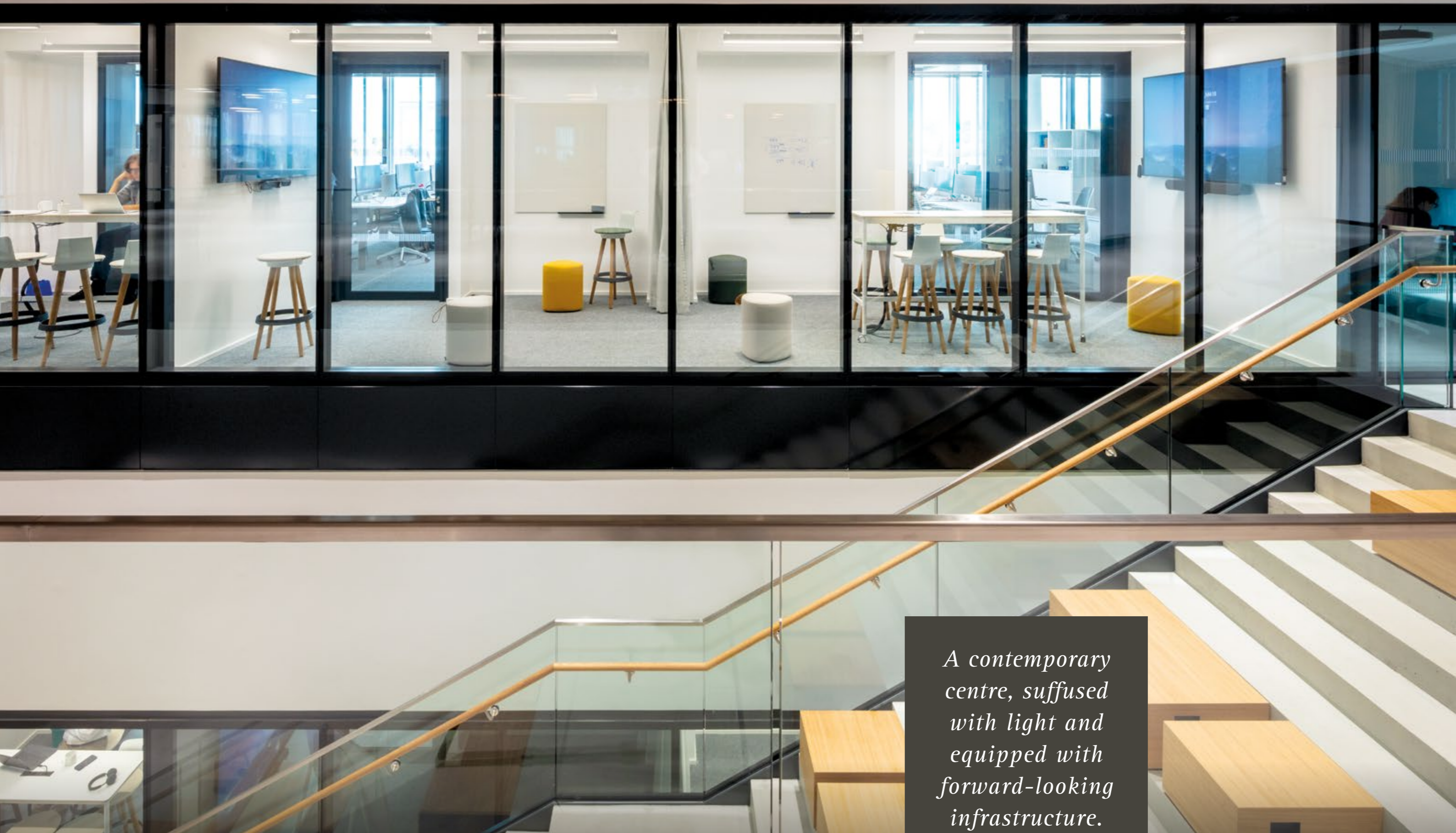
SYSTEM:  
2300

Following a two-year construction period, the new Hilti Innovation Centre has opened, combining communication, integration and flexibility in its own unique way. Meeting rooms, open workspaces and quiet zones provide the space for modern, digital working methods and offer a variety of options for collaboration.



*Transparent  
architecture  
with technical  
intelligence*

The System 2300 partition walls with black profiles ensure both maximum openness and excellent soundproofing. Flush aluminium doors and digital room booking systems support a smart room experience. Two balustrade glass walls foster connection and privacy at the same time.



*A contemporary  
centre, suffused  
with light and  
equipped with  
forward-looking  
infrastructure.*

Kienbaum in Berlin is where design and function come together. The modern office environment boosts creativity and collaboration – while still ensuring discreet spots where employees can concentrate on their work and hold virtual meetings.

# 10

BERLIN

## *Kienbaum Consultants International*

**PLANNING :**

loop GmbH – creating places

**CLIENT :**

Kienbaum Consultants International,  
Berlin

**SYSTEM :**

TEAMBOX TB.2





*Clear-cut,  
elegant,  
optimally  
soundproof*

Thanks to their flush glazing, the TEAMBOX modules from Strähle harmoniously blend into the interior. With striking contrasts, high-quality sound insulation, visual screening and optimal ventilation, they provide a stylish retreat in the open office space.



# 11

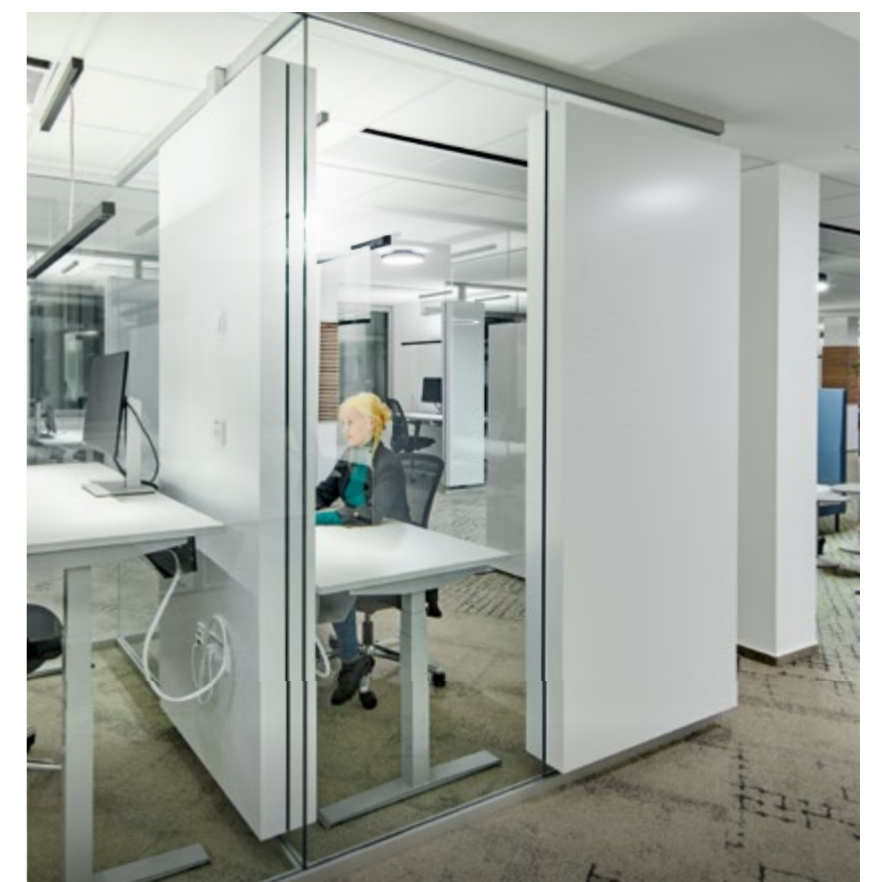
TRIER

## *Sparkasse Trier*

INTERIOR DESIGN:  
Johannes Henn

CLIENT:  
Sparkasse Trier

SYSTEM:  
2000/3400/Kubus I/7400



## *A luminous workplace full of personality*

The Sparkasse bank in Trier has been renovated to create a modern, bright office environment that facilitates collaboration, consultation and focused work in the best possible way – just in time for the company's 200<sup>th</sup> anniversary. When it comes to the room-in-room solutions, glass acoustic walls and modular partition walls, the Strähle products fulfil the very highest design and sound insulation requirements. Over 1000 soundproofing elements and more than 900 linear metres of partition walls guarantee functionality with style.



12

FREIBURG

# Volks- bank Freiburg

ARCHITECTURE :  
Hadi Teherani Architects

CLIENT :  
Volksbank Freiburg eG

SYSTEM :  
2000/2300/3400

The Volksbank-Areal in Freiburg is an architectural statement – powerful, sophisticated and deeply rooted in the local region. The collaboration with Hadi Teherani Architects has produced a contemporary ambience with space for concentrated work, meetings and relaxation. The interior design combines stainless steel, anthracite-coloured surfaces and natural oak – a nod to the Black Forest.





*Maximum sound insulation,  
streamlined structures*

The Strähle systems implemented – including System 2000 and System 2300 structural glazing – blend seamlessly into the sophisticated interior design. Glass partition walls in the communication zones ensure transparency, contrasting with the cosy warm wood tones on the doors and slats.



*Quiet strength  
in the heart of  
Stuttgart*

In the middle of the Königstrasse, Satellite Office offers a quiet and exclusive place to work, thanks to the pureSilent® interior design concept. Over three floors, sustainable materials, elegant forms and sophisticated acoustic solutions come together to create stylish spaces that facilitate full concentration.

13

STUTT GART

*Satellite  
Office*

ARCHITECTURE :  
Satellite Office GmbH

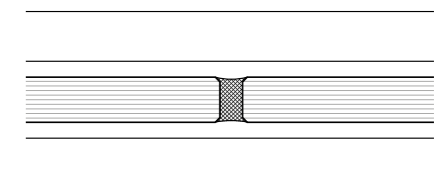
CLIENT :  
Satellite Office GmbH

SYSTEM :  
3400

*Strähle glass walls with their specially designed custom colour shade ensure acoustic excellence and an airy bright ambience.*



*System 3400 variable all-glass system without vertical posts with single-pane glazing.*



As a sound insulation expert, Strähle has already worked at other Satellite Office locations and Stuttgart is worthy of its place in this series of first-class workspaces.

## 14

BERLIN

*BDA**Bund Deutscher  
Architektinnen und  
Architekten*

## CLIENT:

Bund Deutscher Architektinnen und  
Architekten BDA

## SYSTEM:

TEAMBOX TB.2

*Space to concentrate,  
space for clarity*

The TEAMBOX TB.2 has been installed at the BDA's national headquarters in Berlin, providing an acoustically insulated quiet zone for employees to focus on their work, hold confidential meetings or join video conferences. Its streamlined form and flush-fit glazing make for a modern oasis in the industrial setting.





*A curtain provides additional discretion when needed, and the lighting and ventilation can be infinitely adjusted.*

*Streamlined architecture,  
flexible spaces*

Endress + Hauser Flowtec AG has expanded and modernised two additional floors and created a working environment that combines functionality, design and transparency. The Kubus II room-in-room system is at the core of the design: double-glazed, highly soundproofed and with integrated building services for optimal air supply, the modules provide retreat areas for focused work within the open-plan office space.



# 15

REINACH

## *Endress + Hauser Flowtec AG*

ARCHITECTURE:

Rapp AG

CLIENT:

Endress + Hauser Flowtec AG

SYSTEM:

2000 / Kubus II



## *Future-proofed elegance*

The System 2000 partition walls, installed up to a height of 4 metres, ensure generous space and effective acoustic insulation. Flush-mounted aluminium door frames blend harmoniously into the overall design. Thanks to the modular construction, all systems in the precise, architecturally clear-cut working space are flexible and thus able to face whatever the future holds.





# 16

OLDENBURG

## *Oldenburger Volksbank*

**ARCHITECTURE :**  
Droste Droste & Urban  
Architektengesellschaft mbH

**CLIENT :**  
Oldenburger Volksbank

**SYSTEM :**  
System T

Following the merger to create the Oldenburger Volksbank, the institution has moved into the heart of the city. After three years of renovation, the first floor has been transformed into an open-plan meeting place. The former, rather forbidding customer service area is now an open, welcoming foyer offering clear navigation, a feeling of familiarity and opportunities for discretion. Taking centre stage is a long multifunctional bar that acts as a customer service point, a space for interaction and a coffee area. It symbolises the bank's new image: open, unifying and close to its customers. This is where customer experience and the world of work come face to face.



*Strähle's System T partition wall system in a light wood-look design helps users navigate the spaces, while providing discretion and a bright airy ambience.*

Innate clarity. The design concept incorporates warm materials, exposed concrete and the colours of the new corporate identity. The open-plan office environment is structured around meeting areas, quiet rooms and uniform furnishings.



Sophistication and sustainability. With a visible width of just 35 mm, flush-fit glazing and stainless-steel clips, System T ensures elegance as well as function. The laminated wood construction visually accentuates the sustainable nature of the architecture – high-quality, streamlined and future-proof.



17

HAMBURG

# Astra-Zeneca

INTERIOR DESIGN:  
sbp - seelbobsinpartner

CLIENT:  
AstraZeneca

SYSTEM:  
2000

AstraZeneca Deutschland's newly designed spaces in Hamburg are firmly based on its forward-looking iWork philosophy. This activity-oriented workstation strategy gives employees the daily freedom to choose between a range of workspaces variously set up for focused work, creative meetings or informal discussions. There is a perfect place for everyone – tailored to the task in hand and the day's requirements.



## *Understated sophistication*

Strähle's double-glazed all-glass System 2000 with black powder-coated profiles contributes to an elegant and modern ambience. With a high sound insulation level of  $R_{w,P} = 51$  dB, it facilitates undisturbed work in open-plan office environments. The modular construction ensures maximum flexibility and adaptability.





## *Stylishly discreet*

Room-high portal doors and aluminium frame doors with impressive soundproofing create quiet zones with privacy. Individual decals applied to the glass walls help the building's users navigate the spaces and make for a memorable look. Wall thicknesses up to 125 mm and the flush-mounted design ensure that rooms are as sophisticated as they are functional.





18

BASEL

# Roche Bau 2

ARCHITECTURE:  
Herzog & de Meuron

CLIENT:  
Hoffmann-La Roche AG

SYSTEM:  
2300



## *A visionary at the top*

At 205 metres high, Building 2 is not just the tallest building in Switzerland, but also a milestone for modern workspaces. The high-rise building designed by Herzog & de Meuron offers space for 3,500 employees and combines functional architecture with a strong focus on sustainability and communication.

More than 16,000 m<sup>2</sup> of glass walls and 630 doors from Strähle's System 2300 are used to partition the office space.







The new home of CREDION AG is more than just an office – it is a communally designed home office with a tailored multi-space concept. The solution combines open structures with flexibility and space for future growth.

# 19

HAMBURG  
NEUER WALL

## *Credion*

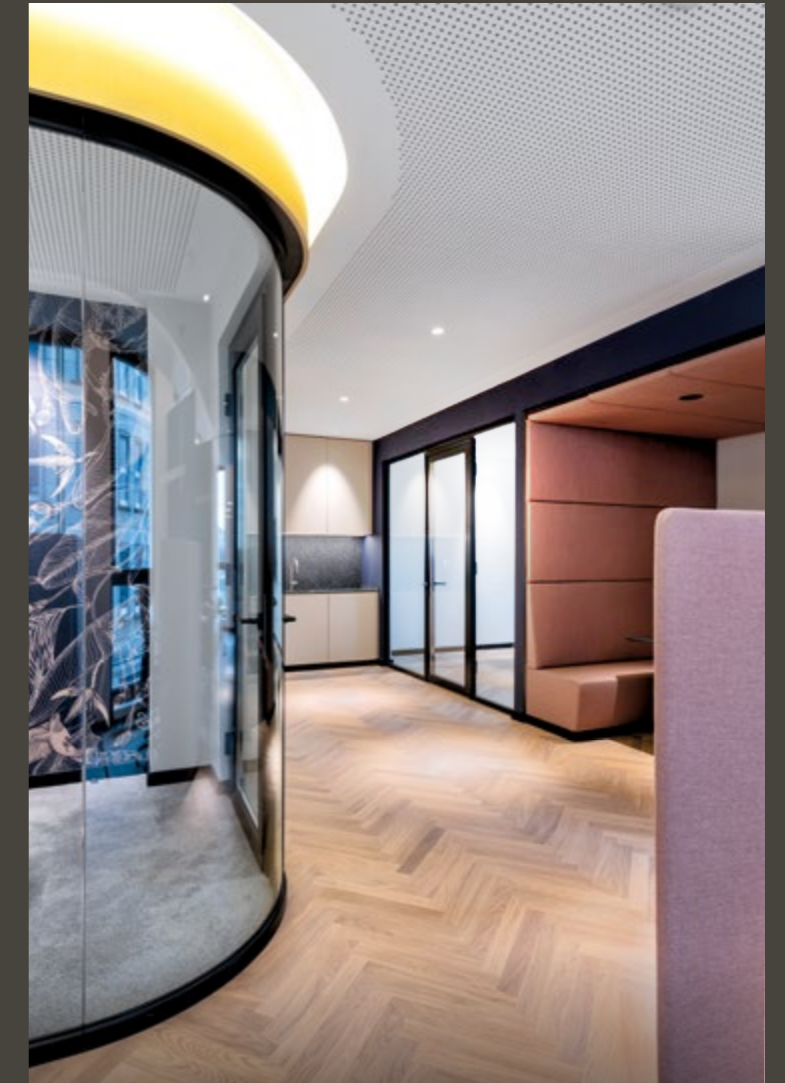
ARCHITECTURE:  
spb seelbobsinpartner

CLIENT:  
Credion AG

SYSTEM:  
3400/3500



Strong visual accents are supplied by the curved glass walls and black profiles of the System 3400 and 3500 partition walls. The zoning concept ensures individual rooms for quiet focus, while offering open spaces for communication.



### *Dynamic flows – acoustic focus*

Individually arranged workstations with acoustic shielding allow users to concentrate on their work, while the double-glazed System 3500 with its increased sound insulation guarantees complete peace and quiet – entirely without vertical posts.





# 20

BERLIN

## *Scout24 SE*

**INTERIOR ARCHITECT:**  
Combine Consulting GmbH  
Combine Design GmbH

**CLIENT:**  
Edge Technologies GmbH

**SYSTEM:**  
2300



In the Edge Grand Central office building in Berlin, Scout24 has established an innovative working environment, offering employees maximum freedom and flexibility. The activity-based concept strengthens creativity and productivity over six floors with state-of-the-art infrastructure.



## *Harmonious and sophisticated*

Strähle's System 2300 glass walls, complemented by curved glazing and light wood veneer, lend an elegant look to the spaces. Flush-mounted doors with excellent soundproofing and transparent curtains create an attractive blend of openness and privacy.





## 21

NÜRNBERG

# Hoffmann Logistik- zentrum

ARCHITECTURE :  
blocher partners

CLIENT :  
Hoffmann Group

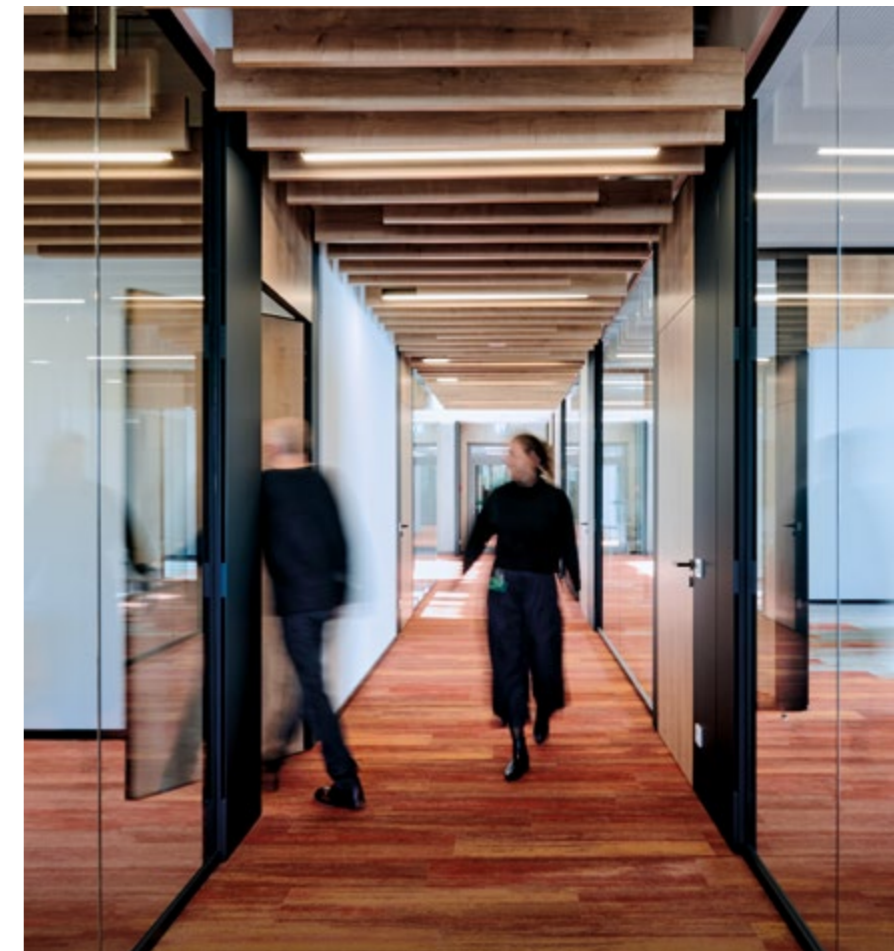
SYSTEM :  
3400

With the new logistics centre in Nürnberg, the Hoffmann Group has built a powerful symbol of innovation and growth. The modern administrative building offers inspiring workstations for around 900 employees and lays the foundation for open, future-focused communication. The office spaces are partitioned using Strähle's elegant all-glass System 3400.



*Black anodised profiles build an elegant contrast to the warm portal doors in Hamilton oak and the coloured flooring – a combination of clarity, design and comfort.*





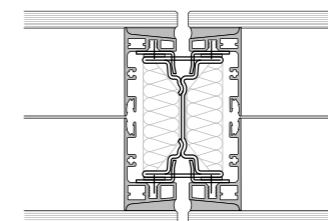
### *Intelligently thought through*

Curved glass walls echo the building's architecture and add dynamism to the spaces. Integrated flow ducts in the doors ensure air is exchanged using a technically precise, yet understated design.



### *Modern elegance with vision*

In the heart of Wien, QBC provides visionary companies with the space to work. The tinted glass of the System 2300 structural glazing creates a spectacular reflection of the Wien skyline and simultaneously ensures privacy – a stylish backdrop for productive work.



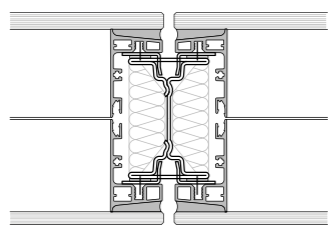
# 22

WIEN

## *Quartier Belvedere Central 2*

CLIENT:  
UBM Development AG

SYSTEM:  
2300



*System 2300  
Structural glazing variants of the  
System Family 2000 with flush-  
mounted all-glass appearance.*





*Striking  
contrast,  
ultimate  
quality*

The black anodised profiles and elegant doors in Kendal oak create a harmonious, yet strongly contrasting look. The flexible system boasts excellent sound insulation and a streamlined, modular design.

# 23

MÜNCHEN

## *Drees & Sommer*

ARCHITECTURE:  
Drees & Sommer

CLIENT:  
Drees & Sommer

SYSTEM:  
2000 eco

With the New Work Hub, Drees & Sommer have created an office of the future – open, collaborative and sustainable. Over the 3,500 m<sup>2</sup> space, employees have the flexibility to choose their perfect workstation – precisely suited to the task in hand.





## *Responsible design*

The System 2000 eco partition walls with black profiles and wood flooring align with modern working methods and sustainability in practice. This holistic, future-oriented approach is underscored by the Cradle to Cradle® certification.



Inspiring vision and well-being. myhive Am Wienerberg offers a modern workspace with a breathtaking view and well-thought-out design. Versatile room concepts, high-quality materials and optimum climate control foster motivated work and creativity.

# 24

WIEN –  
AM WIENERBERG

## *myhive*

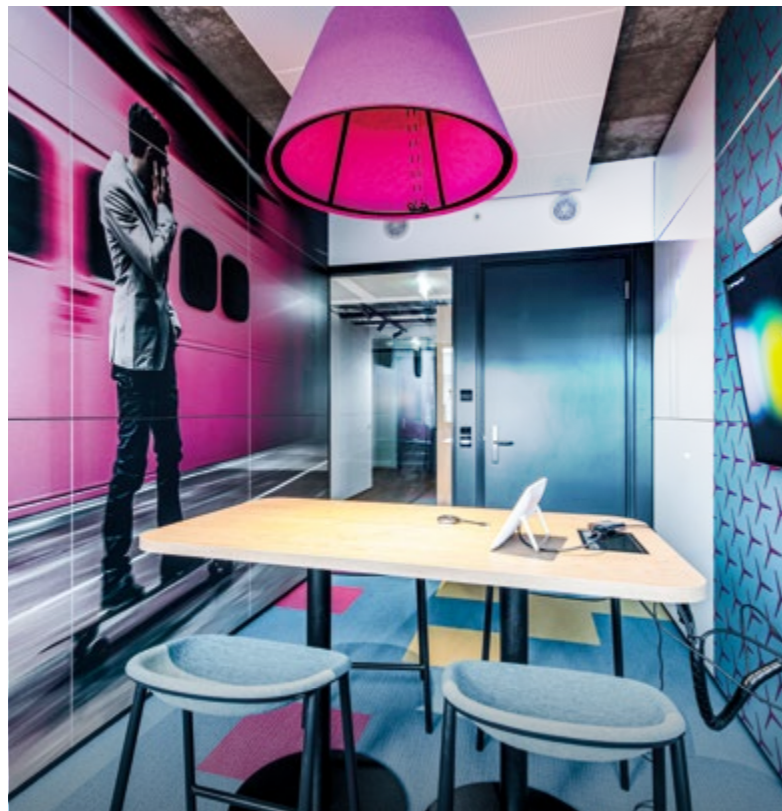
ARCHITECTURE :  
Holzbauer & Partner ZT GmbH

INTERIOR DESIGN :  
Fröch Architekten ZT GmbH

CLIENT :  
IMMOFINANZ AG

SYSTEM :  
2000/2300





### *Technology meets design*

The System 2000 partition walls provide acoustic comfort and a sleek appearance. In the executive board area, the System 2300 switchable glass guarantees maximum discretion at the touch of a button – the ultimate in smart privacy.



*Space for creativity  
and discussion*

The new headquarters of HPP in the Medienhafen district embodies architecture with soul. Generous open spaces, meeting hubs and quiet zones provide room for creative thinking and social togetherness – modern, open, inspiring.



25

DÜSSELDORF

*HPP*

*Architekten*

ARCHITECTURE:  
HPP Architekten GmbH

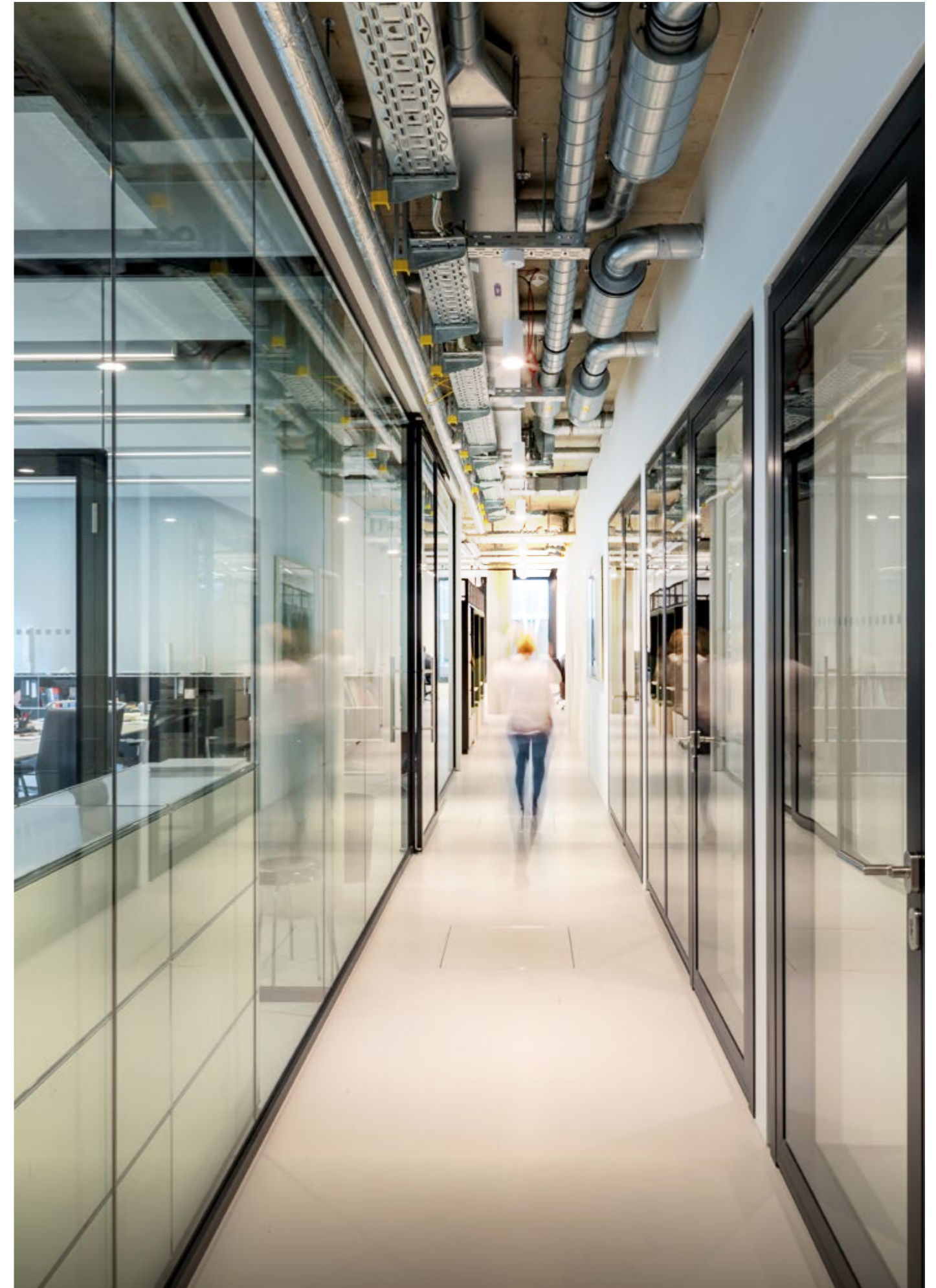
RENTER:  
HPP Architekten GmbH

SYSTEM:  
2000/3400/7000



### *Glass design with character*

The all-glass System 3400 walls with black anodised profiles add stylish touches and meet the most stringent of acoustic requirements – a strong visual appearance for a renowned architectural practice.





In the fully renovated office building of IMMOFINANZ AG, modern partition wall systems ensure a high degree of flexibility and optimal sound insulation over eight floors. Black anodised profiles and a flush appearance on both sides characterise the look.

# 26

WIEN –  
UNGARGASSE

## *myhive*

ARCHITECTURE :  
ARGE Fröch | Hoppe Architekten

CLIENT :  
IMMOFINANZ AG

SYSTEM :  
2000









# 27

BERLIN

## Combine Office

ARCHITECTURE :  
combine design GmbH, Berlin

CLIENT :  
combine Consulting GmbH

SYSTEM :  
Kubus I / Kubus II /  
Ceiling- and Wall mounted Absorber

*Space for ideas  
with an urban vibe*

With "THE BOX" – a former warehouse overlooking the Spree – combine has developed a flexible activity-based concept. Industrial charm meets openness and ultimate flexibility.

*Minimum intervention,  
maximum flexibility*

Reduced construction measures and mobile room units characterise the contemporary ambience. With single or double glazing, LED lighting and mirrored glass, the Kubus modules developed by Strähle adapt to every possible scenario.



*Individual modules, integrated media walls  
and carefully considered details make for a versatile  
and functional office space – a smart solution for  
stylish modern working.*



# 28

HAMBURG  
DOMKASKADEN

## *intersoft GmbH*

ARCHITECTURE:  
KONTOR 8100 Brockmann Architekt

SYSTEM:  
3400/TEAMBOX TB.1





The Domkaskaden office building is a prime example of sustainable architecture – as recognised by the DGNB Gold Certificate. Its striking cascading design creates a unique architectural impression from every perspective – an effect that is echoed internally throughout all ten floors. Situated between the Rathausmarkt, the Kontorhaus district and Hafencity, the Domkaskaden combines modern architecture with urban flair.





### *Flexible spaces with character*

The floors occupied by intersoft GmbH feature a diverse office landscape, combining open areas, informal team zones and quiet retreat spaces. The glass walls of the System 3400 ensure transparency and excellent sound insulation, while the perfect conditions for phone calls and online meetings are offered by the TEAMBOX TB.1 soundproof island. Coloured curtains, plants and black profiles lend the rooms a warm, homely atmosphere with slick design accents.

#### PUBLISHER

Strähle Raum-Systeme GmbH, Waiblingen  
www.straehle.de

#### COMPILATION AND DESIGN

orelunited Werbeagentur GmbH, Stuttgart  
www.orelunited.de

#### THANKS

We would like to thank all the architects, companies, partners, photographers and creative specialists for their collaboration in producing this publication.

#### COPYRIGHT

This publication is the intellectual property of Strähle Raum-Systeme GmbH. Strähle Raum-Systeme GmbH expressly reserves all property rights and copyrights for all content. Reprinting and reproduction – in part or in whole – is only permitted with the prior written permission of Strähle Raum-Systeme GmbH.

#### DISCLAIMER

All information is given with the intention of accuracy and completeness. Strähle Raum-Systeme GmbH would appreciate any feedback on errors or omissions.

#### PHOTOGRAPHY

Huber Fotodesign Project: 1, 20  
Jan Schmiedel Project: 2  
Murat Yilmaz Project: 3, 10, 14, 28  
Debouw Project: 4  
Ana Skobe Project: 5  
Silke Zander Project: 6, 7  
Huber Fotodesign Project: 8, 20, 23  
HG Esch und Jörg Stanzick Project: 9  
Lukas Huneke Project: 11  
Jochen Stüber Project: 12  
Stefan Schöning Project: 13  
Marc Eggimann Project: 15  
Tobias Trapp Project: 16  
Laura Thiesbrummel Project: 17, 27  
Beat Ernst Project: 18  
Knockedesign Project: 19  
Joachim Grothus, Oliver Heintl Project: 21  
Michael Hedl Project: 22, 24, 26  
Ralph Richter Project: 25

Strähle Raum-Systeme GmbH  
straehle.de  
info@straehle.de

GERMANY  
Gewerbestraße 6  
71332 Waiblingen  
T +49 7151 1714-0

Wurzelweg 5  
14822 Borkheide  
T +49 33845 66-0

AUSTRIA  
Industriestraße 9  
2353 Guntramsdorf  
T +43 2236 23232-0

SWITZERLAND  
Dellenbodenweg 1  
4452 Itingen  
T +41 61 463 1332

[www.straehle.de](http://www.straehle.de)